



## Wipes for Critical Environments

Mission-critical cleaning and contamination control

Contec® is a leading manufacturer of contamination control products for critical cleaning in manufacturing environments worldwide. Contec's cleanroom wipes and mops are used in various industries across the globe including biotechnology, pharmaceutical, medical device, healthcare and other critical life science applications.

### **Experienced**

With more than twenty five years of experience behind us, we understand the unique cleaning requirements of these highly regulated markets. Our sales and technical support teams are fully trained to assist customers in finding or creating a Contec product that best meets their needs.

### **Global**

Contec has established a cleanroom manufacturing facility and distribution centre in Europe which allows us to locally support our European customers. Contec owns and operates further manufacturing facilities in South Carolina, USA and Suzhou, China. Contec has a team of technical specialists and sales representatives in Europe, North and South America and Asia. These facilities and dedicated team members give Contec the ability to provide product and technical support to multi-national customers with global needs.

### **Committed to quality**

We recognise our customers as the centre of our organizational structure. Our employees are committed to meeting each customer's specifications and exceeding each customer's expectations. We will achieve this through the periodic review and continuous improvement of all processes in our management system. All manufacturing facilities are certified to ISO 9001:2008 which ensures customers of consistent quality products – from development to delivery. As a vertically integrated manufacturer, Contec controls more of the manufacturing process than any other supplier.

### **Committed to customers**

Let us help solve your cleaning challenges. Product samples, demonstrations and trials are always offered free-of-charge. We have regional technical specialists working with our professional sales staff who will come to your location and recommend the best product and practices for your needs. If necessary we can develop unique custom solutions to your problems.



# Contec Cleanroom Wipes

**A wide range of dry and presaturated, knitted and nonwoven wipes specifically designed for pharmaceutical applications**

**With 25 years of experience in the laundry processing of knitted wipes, Contec has developed the most complete range of wipes and mopping products for the life science industry. Through years of continuous improvement, Contec has created processes which minimise particles and fibres whilst leaving the wipe sorbent enough for good functionality in different pharmaceutical applications.**

In 1992 Contec pioneered the use of presaturated wipes for industrial use. Over 25 years of industry-leading innovation has led to one of the widest ranges of presaturated wipes for life science applications. Our extensive product line for cleanrooms and critical environments includes both sterile and non-sterile, knitted and nonwoven, presaturated and dry wipes in cleanroom compatible packaging that meet the demanding requirements of today's highly regulated pharmaceutical and healthcare industry.

## Contents

Guide to efficient wiping .....	2
Contec Wipe Substrates .....	4
<b>Contec Presaturated Wipes .....</b>	<b>6</b>
- PROSAT <i>Sterile</i> Knitted Polyester Presaturated Wipes .....	8
- PROSAT <i>Sterile</i> Nonwoven Presaturated Wipes .....	9
- PROSAT Presaturated Wipes .....	10
- SATWipes Presaturated Wipes .....	11
<b>Contec Dry Wipes .....</b>	<b>12</b>
- Contec <i>Sterile</i> Knitted Polyester Wipes .....	14
- Contec <i>Sterile</i> Nonwoven Wipes .....	16
- Contec Knitted Polyester Wipes .....	17
- Contec Nonwoven Wipes .....	20
- Contec Microfibre wipes.....	22
- Contec Speciality Wipes.....	23
Wipe Comparison Guide.. .....	25



# Guide to efficient wiping

**Cleanrooms and other controlled environments require stringent control of particles, residues and micro-organisms to ensure the desired product or process outcome. The control of these critical parameters is very often achieved by the use of wipes, either dry or presaturated. Studies have shown that wiping is the most effective method of cleanroom cleaning.<sup>1</sup> Presaturated wipes in particular, are highly suitable for capturing and removing particles and dirt, disturbing biofilms and removing residues.**

Wipes are especially good, not only at picking up dirt and particles, but retaining them and allowing the dirt and particles to be physically removed from the cleanroom. The ability of a wipe to retain and remove a particle or fibre depends on the structure of the wipe and the size of the contaminant. Wetting the wipe significantly enhances particle entrapment and removal. In addition, Contec has developed innovative surface treatments for dry wipes in order to enhance particle removal and retention.

A single facility may need a number of different wipe substrates, sizes and formats to cover all the requirements of the different processes and room grades within the facility. Contec has developed the widest selection of knitted wipes using a variety of fabric types, edge technology and processing options. By adapting these options to meet different cleaning and wiping needs, Contec has engineered a family of pharmaceutical wipes which can be confidently used from Grade A product contact areas through to unclassified support rooms.

"presaturated wipes especially, are highly suitable for capturing and removing particles and dirt..."

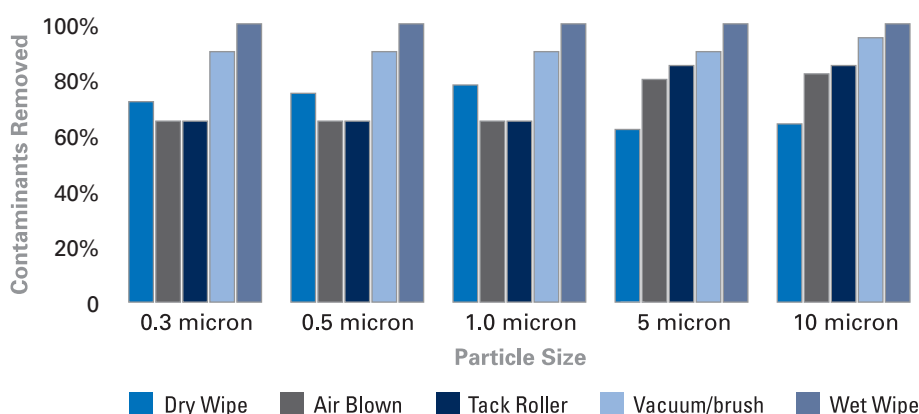
## Dry or presaturated?

Various studies have shown that wiping with saturated wipes is a very effective way to control contamination on a hard surface<sup>1</sup>. Studies of particle adhesion to surfaces have shown that the predominant force binding particles to a surface is a capillary force.<sup>2</sup> The use of a wipe presaturated with a low surface tension fluid such as alcohol helps to lower the surface tension of this binding force facilitating the removal of the particle. Wetting a wipe further enhances its ability to trap particles.

Using a wetted wipe provides an overpowering bias for the particles to remain with the wipe so once the wipe is removed from the environment, the particles go with it, resulting in the most effective method for removing particles from a cleanroom surface. Presaturated wipes offer many other benefits; including increased solvent control especially key in areas with expensive equipment, significantly reduced VOC emissions, increased convenience, increased consistency and repeatability whilst lowering validation time.

The benefits when used for disinfection could be even more significant according to a study which compared the spread of microbial contamination on surfaces cleaned with dry wipes sprayed with alcohol to those cleaned with presaturated wipes.<sup>3</sup> "...our results clearly demonstrated, in a quantitative manner, that alcohol pre-impregnated wipes are more effective at reducing surface bioburden than dry wipes sprayed with alcohol."

## Cleaning Effectiveness Method Comparison <sup>1</sup>



## How to wipe

For the wiping process to be successful the wipe must come into intimate contact with the unwanted contaminants and the process must be consistent and repeatable. There are many areas in a cleanroom where consideration needs to be given to whether the particles are being shielded, Fig 1. Difficult to clean areas should always be cleaned first with particular attention to areas where particles may be difficult to reach.

Technique is also important to prevent the captured contamination being re-deposited on a surface. Some general best practice rules include:-

- Fold the wipe to ensure that even pressure can be applied across the wipe. It also means that a clean side of the wipe can be presented to the surface on every stroke ensuring no contaminants are re-deposited on the surface. Fold the wipe in half and then in half again, this produces up to 8 clean sides to be used. Fig 2.
- Pick up the quarter-folded wipe at the open edges. Grasp the unfolded edges between the thumb and forefinger. When wiping, place equal pressure across the edge of the hand, holding the fingers together and pull across the surface to be cleaned ensuring that the open edges are lifted away from the surface. Angling the hand slightly allows the folded edge of the wipe to remain in consistent contact with the surface.
- Use pull and lift technique technique, shown in Figure 3. Lifting the wipe at the end of every stroke ensures that any contamination is removed from the surface.
- At the end of every stroke, either flip or refold the wipe, exposing a clean surface. A general rule is that the wipe surface needs to be changed every 10 wipe lengths.
- It is important to ensure that no area is missed. To facilitate this, wiping in straight lines with overlapping strokes will mean that every centimetre is covered. To prevent a minuscule gap between the strokes, each stroke should overlap the previous by 10 – 25%. Wiping should never be carried out in a circular motion as this causes the wipe in its dirtiest state to be passed over an area which has just been cleaned.
- Wiping should be carried out from the cleanest area to the dirtiest, most critical to least critical. This will usually be from top to bottom, from back to front, from driest to wettest.

Fig 1

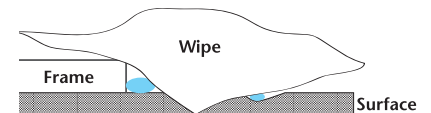


Fig 2

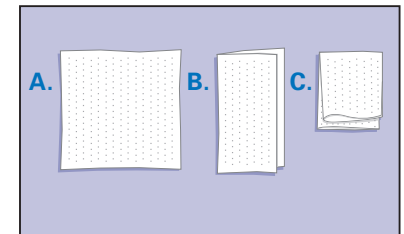


Fig 3

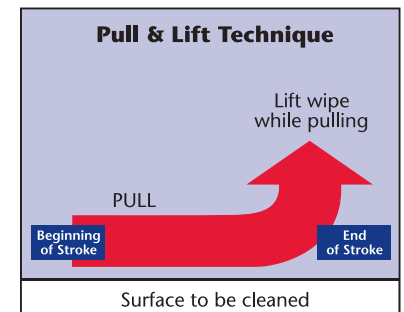
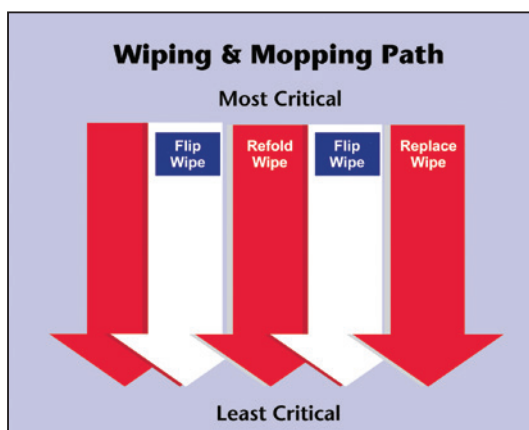


Fig 4



- (1) Cleaning Effectiveness Method Comparison: Contec Presentation 1996: D Nobile
- (2) Wiping Surfaces Clean: Vicon Publishing 2004: H Siegeman Ph.D
- (3) Evaluation of alcohol wipes used during aseptic manufacturing: The Society for Applied Microbiology, Letters in Applied Microbiology 48 648-651: M.N. Panousi, G.J. Williams, S. Girdlestone, S.J. Hiom and J.-Y. Maillard (2009)

## Contec Wipe Substrates

"Polyester knits are the cleanest category of wipes for critical environments"

**A variety of performance attributes can be measured for each type of wipe substrate available. Very often a compromise needs to be made between the different attributes. The decision of which wipe to choose for a particular application should be risk based, dependant on the relative impact on a product or process.**

**Cleanliness:** Every wipe will contain some contaminants, so it is important to minimise the deposition onto critical surfaces during wiping. Laundered, sealed-edge, synthetic wipes are the cleanest available option; however, they are also less sorbent and more expensive than wipes made of natural fibres. Test results are usually declared for particles and fibres, fibres generally referring to individual "long" particles over 100µm. Various test methods are available, using both wet and dry methods of particle release, often using optical microscopy, automatic particle counters, or scanning electron microscope to count the particles released.

Care should be taken when comparing results, as comparing technical data from different sources is an inexact science due to the variability between different test methods and different testing equipment. The test methods for particles and fibres often vary considerably and the results even more so.

**Sorbent properties:** The ability of the substrate to absorb liquids. Sorbent properties are critical for the removal of liquids, especially when wiping to dry.

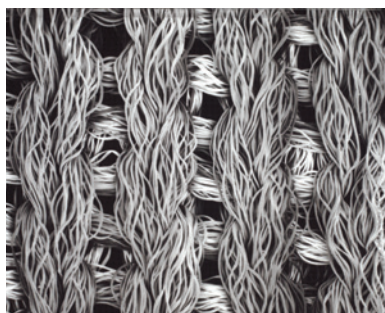
Test results are usually available for the intrinsic and extrinsic sorbency and the rate of sorbtion. Intrinsic sorbency is usually reflected as ml/g and extrinsic sorbency as ml/m<sup>2</sup>.

Wipes containing natural fibres have better sorbent properties, however they tend to release higher levels of particulates and fibres. In general, synthetic wipes (polyester and polypropylene) tend to become more sorbent as the fibre size is reduced, with microfibre products being the most sorbent option. Polyester wipes can be treated during the finishing process to improve their sorbency. Contec's Anticon wipes use a patented textile technology to achieve superior sorbtion characteristics.

**Weight:** Often expressed as g/m<sup>2</sup>, this variable has an effect on sorbent capacity and cost.

**Chemical compatibility:** Pure synthetics such as polyester nonwovens and knitted fabrics offer the greatest range of chemical compatibility, while those containing cellulose are susceptible to degradation by moderately caustic solutions and are not suitable for use with all disinfectants.

Contec has a range of substrates to suit all applications and budgets within a pharmaceutical cleanroom.



100% no-run interlock knit polyester

### Polyester knitted wipes

Polyester knits are the cleanest category of wipes for critical environments due to the long filament synthetic polyester fibres. Inherently hydrophobic, the polyester needs to be treated with an appropriate finishing treatment to render the material sorbent to aqueous solutions as well as solvents.

Contec's polyester wipes are manufactured from multi-filament textured polyester yarn which is low in particulates and high in abrasion resistance. All Contec's knitted wipes have been laundered in a Class 4 cleanroom. The specialised process creates wipes where particle release has been minimised yet leaves the wipes sorbent enough for good functionality.

The knitted wipes can be created using either an interlock knit, or a no-run interlock knit. Interlock knitting creates a heavier basis weight and a durable fabric. The periodic additional stitch of a no-run interlock knit prevents the fabric unravelling creating an even more durable fabric with strong edges.

## 2-Ply Quilted Polyester

### (Quiltec I)

A 2-ply quilted polyester wipe in a laminated construction. The lamination of two layers of fabric allows the final product to have more than twice the sorbency of the two single ply layers. It is the most sorbent sealed edge wipe available.

### 100% knitted polyester with sealed edges

#### (White Magic, Polynit Heatseal, Polywipe-C Heatseal, Anticon Gold HeavyWeight)

Knitted 100% textured polyester wipes with laser cut sealed edges for very low levels of particles and fibres. Laser cutting seals the fibres at the edge of the wipe allowing 100% utilization of the wipe.

### 100% knitted polyester

#### (Polynit, Polywipe-C, Anticon 100 HeavyWeight)

Also knitted from 100% textured polyester filament, these wipes are knife cut. A knife cut edge provides a very soft edged wipe that is non abrasive.

## Nonwoven Wipes

Nonwoven wipes offer a variety of performance characteristics and excellent value. Contec offers a wide range of sterile and non-sterile nonwoven wipes, both dry and presaturated.

Most high quality nonwovens on the market today are made using a hydroentangling process. This method entangles the fibres using high pressure jets of filtered water and cleans the fabric during the manufacturing process. No binders or additives are used ensuring there are no residues likely to remain on a surface. Creating wipes in this way allows synergistic blends of different fibre types to be created such a polyester / rayon or polyester / cellulose. Another method of creating a nonwoven wipe is to use a thermal bonding process. This is used for the polypropylene wipes.

### Hydroentangled 100% polyester

#### (Amplitude Delta)

100% nonwoven polyester wipes with no binders or additives. Cost effective polyester wipe with excellent cleanliness and sorbency with solvents. Very soft wipe with both wet and dry strength.

### Hydroentangled polyester/cellulose

#### (Amplitude EcoCloth, Amplitude Epsilon, Amplitude Prozorb, Amplitude Sigma, Amplitude Theta, SterileSorb)

Hydroentangled polyester / cellulose wipes which are extremely absorbant with good wet strength. Excellent general purpose wipes.

### Hydroentangled polyester/lyocell

#### (Dupont™ Sontara® Nonpyrogenic)

A manufactured form of cellulose, Lyocell is very strong and sorbent. Sontara hydroentangled polyester / lyocell wipes have been processed in such a way as to minimise endotoxin contamination.

### Meltblown polypropylene

#### (Amplitude Helix)

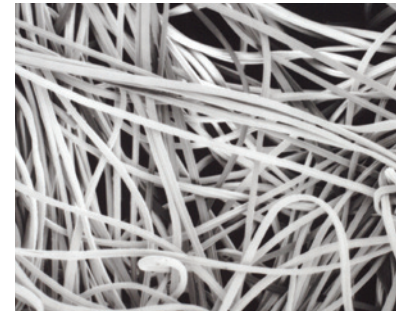
Meltblown polypropylene wipes are manufactured by thermally bonding very fine polypropylene fibres to form a very clean wipe fabric with good solvent resistance. An economical wipe with low particle generation. The fine filament structure allows a metered release of alcohol or disinfectant.

### Thermally laminated polypropylene/ cellulose

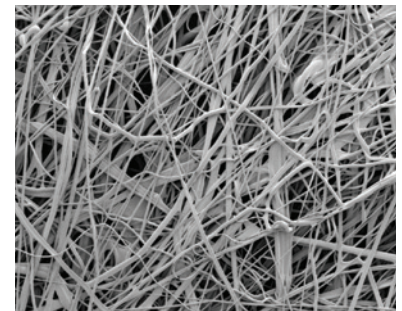
#### (Amplitude Zeta)

Where increased sorption is required this 3 ply quilted wipe is highly sorptive with all fluids. An inner core of cellulose between two layers of polypropylene allows fluids to be absorbed and "locked" into the pockets created by the quilting process.

"Contec offers a wide range of sterile and non-sterile nonwoven wipes"



Nonwoven polyester



Meltblown polypropylene



Hydroentangled polyester / cellulose

# Contec Presaturated Wipes



- Range of substrates and formats suitable for all areas of the cleanroom facility from critical Grade A zones to unclassified product support areas.
- Easy to use, allowing rapid, effective and efficient application of the alcohol solution.
- Presaturated with either 70% IPA or Denatured Ethanol the wipes significantly reduce airborne levels of alcohol solution and improve operator safety.
- Improve process control and repeatability.

Presaturated wipes can offer many benefits over bottled alcohol and dry wipes for cleanroom use. Contec presaturated wipes were first introduced into cleanrooms at IBM in 1992, to reduce solvent use and increase convenience in hand wiping. Since they provide exceptional solvent control presaturated wipes were also soon adopted by the medical device and pharmaceutical industry.

Contec supplies two ranges of presaturated wipes:

- the PROSAT range for higher grade cleanrooms, packaged in small quantities in resealable pouches to prevent drying out and preserve cleanliness
- and SATWipes packaged in reusable canisters for use when large numbers of presaturated wipes are needed.

The PROSAT pouches are available with small numbers of wipes per pouch meaning all wipes can be used in a session ensuring no wastage. Wipes are available as 100% polyester knits for very low levels of fibres and particles down to cost effective polyester/cellulose blends, so suitable for all grades of cleanroom. For product contact areas, wipes with guaranteed low levels of endotoxins are available.

Where large volumes of presaturated wipes are required the wipes are supplied in reusable self closing canisters in a perforated centre-pull roll. Wipe substrates in the SATWipe range include nonwoven polyester, polyester/cellulose and polyester/rayon.

Contec's presaturated wipes can be tailored to your specific requirements. Variables include fabric selection, solvent, saturation level and packaging. Contact your local distributor to discuss the correct parameters for your application.

## Features and benefits

<b>Guaranteed saturation levels with either 70% IPA or Denatured Ethanol</b>	<ul style="list-style-type: none"> <li>• Reduces airborne levels of alcohol helping to meet Health and Safety limits</li> <li>• Reduces hazardous waste by up to 40%</li> <li>• Reduces validation work</li> <li>• Reduces costs</li> <li>• Reduces inventory and storage space required</li> <li>• Increases operator and environmental safety</li> <li>• Increases process control and repeatability</li> <li>• Increases convenience</li> </ul>
<b>Resealable pouches with small quantities of wipes</b>	<ul style="list-style-type: none"> <li>• Suitable for use in the highest grade cleanrooms with no wastage</li> </ul>
<b>Wide range of substrates available</b>	<ul style="list-style-type: none"> <li>• Most cost effective and suitable wipe can be used in each cleanroom area</li> </ul>
<b>Validated sterile options</b>	<ul style="list-style-type: none"> <li>• Meets GMP requirements for sterile products in Grade A and B zones</li> </ul>
<b>Refillable self-closing canister</b>	<ul style="list-style-type: none"> <li>• Convenient and cost effective method of presaturated wipe presentation</li> </ul>
<b>Refillable clear canister</b>	<ul style="list-style-type: none"> <li>• "See-through" canister allows complete traceability as batch code and expiry date of the refill can be seen</li> </ul>



## Presaturated Wipe Packaging Options

Contec’s presaturated wipes are available in a number of formats specifically designed for different areas of use within the cleanroom. For sterile and small-area use, presaturated wipes are available in compact resealable pouches. The low number of wipes in these pouches mean the wipes can all be used in a single session so eliminating wastage. Alternatively, for large areas, more cost effective pouches with flat stacked wipes are available.

Other bulk packed options include the SatBox and the Mag Bag. The SatBox can be used to store wipes overnight, if they are not all used in one session. The Mag Bag is a free standing foil pouch which readily snaps shut to prevent wipes drying out during use. Designed for use with bulk packed presaturated wipes, the Mag Bag can be tailored to your specific need.

SATWipes are provided in a range of small canisters and larger buckets. Refill packs are available, contact your local distributor for details.

## Presaturated Wipe Selection Guide



Contec Presaturated Wipes											
Product Name	Wipe Substrate	Edge Style	Sterile	Non-sterile	70% IPA	70% DE	Pouch	Canister	Area of use		
									Grade A/B	Grade C/D	Prep Areas
PROSAT Sterile Polynit Heatseal	100% no-run interlock knit polyester	Sealed	Y		Y		Y		V	N	N
PROSAT Sterile Amplitude Delta	100% nowoven polyester	Cut	Y		Y		Y		V	S	N
PROSAT Sterile MBPP	Meltblown polypropylene	Cut	Y		Y	Y	Y		S	S	N
PROSAT Sterile Amplitude Sigma	Nonwoven polyester / cellulose	Cut	Y		Y		Y		S	S	N
PROSAT Sterile Amplitude Theta	Nonwoven polyester / cellulose	Cut	Y		Y		Y		S	S	N
PROSAT Polynit Heatseal	100% no-run interlock knit polyester	Sealed		Y	Y		Y		N	V	N
PROSAT MBPP	Meltblown polypropylene	Cut		Y	Y		Y		N	V	S
PROSAT Amplitude Sigma	Nonwoven polyester / cellulose	Cut		Y	Y		Y		N	V	S
PROSAT Amplitude Theta	Nonwoven polyester / cellulose	Cut		Y	Y		Y		N	V	S
SATWipes SAT-C3-7030	100% nowoven polyester	Perforated		Y	Y			Y	N	S	V
SATWipes SAT-PP-7030	Meltblown polypropylene	Perforated		Y	Y			Y	N	S	V
SATWipes SAT-C1-7030	Nonwoven polyester / cellulose	Perforated		Y	Y			Y	N	S	V
SATWipes SWNW0013	Nonwoven polyester / rayon	Perforated		Y	Y			Y	N	N	V

V Very suitable

S Suitable

N Not suitable

# PROSAT *Sterile* Knitted Presaturated Wipes

"the ideal wipe needs to be sterile, very low in fibres and particles whilst being able to apply an even layer of alcohol or disinfectant"

- Designed specifically for Grade A/B environments the wipes are packaged in easy to open, resealable pouches to prevent drying out and preserve cleanliness.
- 100% knitted polyester, sealed edge wipes provide extremely low levels of particle and fibres.
- 70% IPA with either WFI (EP) or deionised water.

Product contact areas have the most stringent requirement of any pharmaceutical cleanroom wipe. The ideal wipe needs to be sterile, very low in fibres and particles whilst being able to apply an even layer of alcohol or disinfectant. There may also be a requirement for guaranteed low levels of endotoxins.

The wipes are packaged in small quantities, a maximum of 30 wipes per pouch to eliminate wastage. Either validated sterile to 10<sup>-6</sup> SAL or irradiated at a minimum of 25 kGy the pouches are provided in double or triple wrapped plastic packaging for easy transfer into the Grade A zone. Each sterile product comes with lot-specific Certificates of Conformance and Irradiation.



## Ordering Guide

### PROSAT *Sterile* Polynit Heatseal with 70% IPA and 30% WFI (EP)

- 140g/m<sup>2</sup> no-run interlock knit 100% polyester with sealed edges for very low levels of particulates
- Each pouch is individually triple bagged for easy transfer into isolators and RABS
- Less than 1 endotoxin unit per wipe
- Small pouch available so ideal for use in isolator systems

Part No	Size	Packaging
PSWE0001	230 x 230mm	10 wipes per pouch
PSWE0002	300 x 300mm	30 wipes per pouch
PSWE0003	300 x 300mm	10 wipes per pouch

### PROSAT *Sterile* Polynit Heatseal with 70% IPA and 30% DI Water

- 140g/m<sup>2</sup> no-run interlock knit 100% polyester with sealed edges for very low levels of particulates
- Laundered and packed in a Class 4 cleanroom

Part No	Size	Packaging
PSPS0073	150 x 230mm	30 wipes per pouch
PSPS0093	230 x 230mm	20 wipes per pouch
PSPS0091	300 x 300mm	20 wipes per pouch

# PROSAT *Sterile* Nonwoven Presaturated Wipes

- Designed specifically for Grade A/B environments the wipes are packaged in easy to open, resealable pouches to prevent drying out and preserve cleanliness.
- 100% nonwoven polyester provides a cost effective synthetic fibre option.
- 70% IPA or Denatured Ethanol with deionised water.

Contec's nonwoven sterile presaturated wipes provide an economical way to clean and disinfect in Grade A and B cleanrooms. Nonwoven 100% polyester provides excellent cleanliness and durability. Sterile polyester / cellulose wipes are ideal general purpose wipes with low levels of particles and fibres. Meltblown polypropylene wipes have a high level of cleanliness and allow the application of a very even film of alcohol due to the metered release of fluid from the wipe.

The wipes maybe packaged in small quantities, for example 30 wipes per pouch to eliminate wastage. Either validated sterile to  $10^{-6}$  SAL or irradiated at a minimum of 25 kGy the pouches are provided in double plastic packaging for easy transfer into the Grade A zone. Each sterile product comes with lot-specific Certificates of Conformance and Irradiation.



"Nonwoven 100% polyester provides excellent cleanliness and durability"

## Ordering Guide

<p><b>PROSAT <i>Sterile</i> Amplitude Delta with 70% IPA and 30% DI water</b></p>	<ul style="list-style-type: none"> <li>• 68g/m<sup>2</sup> nonwoven polyester wipe, a cost effective polyester wipe</li> <li>• Soft durable and non abrasive</li> </ul> <table border="1"> <thead> <tr> <th>Part No</th> <th>Size</th> <th>Packaging</th> </tr> </thead> <tbody> <tr> <td>PS-7030IR</td> <td>230 x 230mm</td> <td>20 wipes per pouch</td> </tr> </tbody> </table>	Part No	Size	Packaging	PS-7030IR	230 x 230mm	20 wipes per pouch						
Part No	Size	Packaging											
PS-7030IR	230 x 230mm	20 wipes per pouch											
<p><b>PROSAT <i>Sterile</i> meltblown polypropylene with 70% IPA or Denatured Ethanol and 30% DI water</b></p>	<ul style="list-style-type: none"> <li>• 34g/m<sup>2</sup> meltblown polypropylene especially suitable for the metered release of 70% alcohol</li> <li>• Microsized filaments provide exceptional particle removal</li> </ul> <table border="1"> <thead> <tr> <th>Part No</th> <th>Size</th> <th>Packaging</th> </tr> </thead> <tbody> <tr> <td>PS-911EB</td> <td>230 x 280mm</td> <td>30 wipes per pouch</td> </tr> <tr> <td>PS-911EB/ETOH</td> <td>230 x 280mm</td> <td>30 wipes per pouch</td> </tr> <tr> <td>PSPP0039</td> <td>230 x 280mm</td> <td>50 wipes per pouch</td> </tr> </tbody> </table>	Part No	Size	Packaging	PS-911EB	230 x 280mm	30 wipes per pouch	PS-911EB/ETOH	230 x 280mm	30 wipes per pouch	PSPP0039	230 x 280mm	50 wipes per pouch
Part No	Size	Packaging											
PS-911EB	230 x 280mm	30 wipes per pouch											
PS-911EB/ETOH	230 x 280mm	30 wipes per pouch											
PSPP0039	230 x 280mm	50 wipes per pouch											
<p><b>PROSAT <i>Sterile</i> Amplitude Sigma with 70% IPA and 30% DI water</b></p>	<ul style="list-style-type: none"> <li>• 68g/m<sup>2</sup> polyester / cellulose hydroentangled wipe</li> <li>• Low levels of particles and fibres</li> <li>• Highly sorbent with good wet strength</li> </ul> <table border="1"> <thead> <tr> <th>Part No</th> <th>Size</th> <th>Packaging</th> </tr> </thead> <tbody> <tr> <td>PSC20001</td> <td>230 x 280mm</td> <td>24 wipes per pouch</td> </tr> </tbody> </table>	Part No	Size	Packaging	PSC20001	230 x 280mm	24 wipes per pouch						
Part No	Size	Packaging											
PSC20001	230 x 280mm	24 wipes per pouch											
<p><b>PROSAT <i>Sterile</i> Amplitude Theta with 70% IPA and 30% DI water</b></p>	<ul style="list-style-type: none"> <li>• 54g/m<sup>2</sup> lightweight polyester / cellulose hydroentangled wipe</li> <li>• Economical wipe with low levels of particles and fibres</li> <li>• Highly sorbent with good wet strength</li> </ul> <table border="1"> <thead> <tr> <th>Part No</th> <th>Size</th> <th>Packaging</th> </tr> </thead> <tbody> <tr> <td>PSCP0001</td> <td>150 x 230mm</td> <td>50 wipes per pouch</td> </tr> <tr> <td>PSC20005</td> <td>230 x 280mm</td> <td>50 wipes per pouch</td> </tr> </tbody> </table>	Part No	Size	Packaging	PSCP0001	150 x 230mm	50 wipes per pouch	PSC20005	230 x 280mm	50 wipes per pouch			
Part No	Size	Packaging											
PSCP0001	150 x 230mm	50 wipes per pouch											
PSC20005	230 x 280mm	50 wipes per pouch											

# PROSAT Presaturated Wipes



- A range of non-sterile pouch wipes including 100% knitted polyester, meltblown polypropylene and polyester / cellulose blends.
- Easy to use, allowing rapid, effective and efficient application of the alcohol, especially suitable for transfer disinfection.
- Presaturated with either 70% IPA or Denatured Ethanol the wipes significantly reduce airborne levels of alcohol and improve operator safety.

The PROSAT range of presaturated pouch wipes is also available non-sterile for use in Grade C and D cleanrooms. Supplied in larger quantities, the wipes allow a convenient and efficient application of alcohol solutions.

For facilities which need extremely low levels of particles and fibres but do not require a sterile wipe, PROSAT Polynit Heatseal is a 100% no-run interlock polyester knit with sealed edges. Cost effective polyester / cellulose wipes which provide a balance of low particulates with good sorbency are available in different pack format and wipe size. Meltblown polypropylene provides a metered release of solvent so is especially suitable for the application of an alcohol or a disinfectant.

If all wipes are not used in a single session, the validated SatBox allows wipes to be stored in a durable, plastic, gasket sealed box preventing solvent evaporation and any potential contamination of the wipes. Where large quantities of presaturated wipes are needed, bulk packed PROSAT Polywipe-C Heatseal wipes, can be used with the Mag Bag which readily snaps shut during use to prevent the wipes drying out. Each case of wipes is provided with a Mag Bag.

## Ordering Guide

<p><b>PROSAT Polynit Heatseal with 70% IPA and 30% DI water</b></p>	<ul style="list-style-type: none"> <li>• 140g/m<sup>2</sup> no-run interlock knit 100% polyester with sealed edges for very low levels of particles and fibres</li> <li>• Laundered and packed in a Class 4 cleanroom</li> </ul> <table border="1"> <thead> <tr> <th>Part No</th> <th>Size</th> <th>Packaging</th> </tr> </thead> <tbody> <tr> <td>PS-HS9-7030</td> <td>230 x 230mm</td> <td>30 wipes per pouch</td> </tr> <tr> <td>PSPS0047</td> <td>300 x 300mm</td> <td>30 wipes per pouch</td> </tr> </tbody> </table>	Part No	Size	Packaging	PS-HS9-7030	230 x 230mm	30 wipes per pouch	PSPS0047	300 x 300mm	30 wipes per pouch						
Part No	Size	Packaging														
PS-HS9-7030	230 x 230mm	30 wipes per pouch														
PSPS0047	300 x 300mm	30 wipes per pouch														
<p><b>PROSAT Polywipe-C Heatseal with 70% IPA and 30% DI water</b></p>	<ul style="list-style-type: none"> <li>• 120g/m<sup>2</sup> lightweight 100% textured polyester interlock knit wipe</li> <li>• Cost effective polyester wipe with laser sealed edges to allow 100% utilisation of the wipe</li> <li>• Bulk packed and includes a Mag Bag for storage</li> </ul> <table border="1"> <thead> <tr> <th>Part No</th> <th>Size</th> <th>Packaging</th> </tr> </thead> <tbody> <tr> <td>PSPS0035</td> <td>230 x 230mm</td> <td>75 wipes per pouch</td> </tr> </tbody> </table>	Part No	Size	Packaging	PSPS0035	230 x 230mm	75 wipes per pouch									
Part No	Size	Packaging														
PSPS0035	230 x 230mm	75 wipes per pouch														
<p><b>PROSAT meltblown polypropylene with 70% IPA or Denatured Ethanol and 30% DI water</b></p>	<ul style="list-style-type: none"> <li>• 34g/m<sup>2</sup> meltblown polypropylene especially suitable for the metered release of alcohol</li> <li>• Microsized filaments provide exceptional particle removal</li> </ul> <table border="1"> <thead> <tr> <th>Part No</th> <th>Description</th> <th>Packaging</th> </tr> </thead> <tbody> <tr> <td>PS-911</td> <td>230 x 280mm</td> <td>30 wipes per pouch</td> </tr> <tr> <td>PS-911ETOH</td> <td>230 x 280mm</td> <td>30 wipes per pouch</td> </tr> <tr> <td>PS-850</td> <td>200 x 200mm</td> <td>50 wipes per pouch</td> </tr> <tr> <td>PSPP0043</td> <td>230 x 280mm</td> <td>50 wipes per pouch</td> </tr> </tbody> </table>	Part No	Description	Packaging	PS-911	230 x 280mm	30 wipes per pouch	PS-911ETOH	230 x 280mm	30 wipes per pouch	PS-850	200 x 200mm	50 wipes per pouch	PSPP0043	230 x 280mm	50 wipes per pouch
Part No	Description	Packaging														
PS-911	230 x 280mm	30 wipes per pouch														
PS-911ETOH	230 x 280mm	30 wipes per pouch														
PS-850	200 x 200mm	50 wipes per pouch														
PSPP0043	230 x 280mm	50 wipes per pouch														
<p><b>PROSAT Amplitude Sigma with 70% IPA and 30% DI water</b></p>	<ul style="list-style-type: none"> <li>• 68g/m<sup>2</sup> polyester / cellulose hydroentangled wipe</li> <li>• Low levels of particles and fibres</li> <li>• Highly sorbent with good wet strength</li> </ul> <table border="1"> <thead> <tr> <th>Part No</th> <th>Description</th> <th>Packaging</th> </tr> </thead> <tbody> <tr> <td>PSC20002</td> <td>230 x 280mm</td> <td>24 wipes per pouch</td> </tr> </tbody> </table>	Part No	Description	Packaging	PSC20002	230 x 280mm	24 wipes per pouch									
Part No	Description	Packaging														
PSC20002	230 x 280mm	24 wipes per pouch														
<p><b>PROSAT Amplitude Theta with 70% IPA and 30% DI water</b></p>	<ul style="list-style-type: none"> <li>• 54g/m<sup>2</sup> lightweight polyester / cellulose hydroentangled wipe</li> <li>• Economical wipe with low levels of particles and fibres</li> <li>• Highly sorbent with good wet strength</li> </ul> <table border="1"> <thead> <tr> <th>Part No</th> <th>Description</th> <th>Packaging</th> </tr> </thead> <tbody> <tr> <td>PSC20006</td> <td>230 x 280mm</td> <td>50 wipes per pouch</td> </tr> </tbody> </table>	Part No	Description	Packaging	PSC20006	230 x 280mm	50 wipes per pouch									
Part No	Description	Packaging														
PSC20006	230 x 280mm	50 wipes per pouch														

# SATWipes Presaturated Wipes

- Developed as a safer, better way to handle solvents and wipes SATWipes consist of presaturated wipes dispensed from a roll in a reusable canister.
- Choice of substrates from high quality 100% nonwoven polyester through to rayon and cellulose blends.
- Centre pull rolls and self closing canister lids reduce airborne vapours especially during transfer disinfection.

The SATWipes cleaning system consists of presaturated wipes dispensed from a centre pull roll in a reusable canister. The reusable canisters are available in a variety of sizes. To preserve product integrity the rolls are packaged in specially designed pouches, which are opened and loaded inside the SATWipes canister.

Wipes substrates include 100% nonwoven polyester, polyester / cellulose and polyester/rayon blends. Ideal for transfer disinfection, the wipes are available in a variety of sizes from 100 x 110mm and 300 x 320mm.

"The SATWipes cleaning system consists of presaturated wipes dispensed from a centre pull roll in a reusable canister"



## Ordering Guide

<p><b>SATWipes nonwoven polyester with 70% IPA and 30% DI water</b></p>	<ul style="list-style-type: none"> <li>• 68g/m<sup>2</sup> nonwoven polyester wipe, a cost effective polyester wipe</li> <li>• Soft durable and non abrasive</li> </ul> <table border="1"> <thead> <tr> <th>Part No</th> <th>Size</th> <th>Packaging</th> </tr> </thead> <tbody> <tr> <td>SAT-C3-7030</td> <td>150 x 230mm</td> <td>100 wipes per roll</td> </tr> </tbody> </table>	Part No	Size	Packaging	SAT-C3-7030	150 x 230mm	100 wipes per roll
Part No	Size	Packaging					
SAT-C3-7030	150 x 230mm	100 wipes per roll					
<p><b>SATWipes polyester / cellulose with 70% IPA and 30% DI water</b></p>	<ul style="list-style-type: none"> <li>• 68g/m<sup>2</sup> hydroentangled polyester / cellulose wipe</li> <li>• Cost effective blend providing low levels of particulates</li> </ul> <table border="1"> <thead> <tr> <th>Part No</th> <th>Size</th> <th>Packaging</th> </tr> </thead> <tbody> <tr> <td>SAT-C1-7030</td> <td>150 x 230mm</td> <td>100 wipes per roll</td> </tr> </tbody> </table>	Part No	Size	Packaging	SAT-C1-7030	150 x 230mm	100 wipes per roll
Part No	Size	Packaging					
SAT-C1-7030	150 x 230mm	100 wipes per roll					
<p><b>SATWipes meltblown polypropylene with 70% IPA and 30% DI water</b></p>	<ul style="list-style-type: none"> <li>• 34g/m<sup>2</sup> meltblown polypropylene especially suitable for the metered release of alcohol</li> <li>• Microsized filaments provide exceptional particle removal</li> </ul> <table border="1"> <thead> <tr> <th>Part No</th> <th>Size</th> <th>Packaging</th> </tr> </thead> <tbody> <tr> <td>SAT-PP-7030</td> <td>150 x 230mm</td> <td>150 wipes per roll</td> </tr> </tbody> </table>	Part No	Size	Packaging	SAT-PP-7030	150 x 230mm	150 wipes per roll
Part No	Size	Packaging					
SAT-PP-7030	150 x 230mm	150 wipes per roll					
<p><b>SATWipes polyester / rayon with 70% IPA and 30% DI water</b></p>	<ul style="list-style-type: none"> <li>• 38g/m<sup>2</sup> hydroentangled polyester / rayon wipe</li> <li>• Cost effective blend for less critical applications</li> </ul> <table border="1"> <thead> <tr> <th>Part No</th> <th>Size</th> <th>Packaging</th> </tr> </thead> <tbody> <tr> <td>SWNW0013</td> <td>175 x 230mm</td> <td>700 wipes per roll</td> </tr> </tbody> </table>	Part No	Size	Packaging	SWNW0013	175 x 230mm	700 wipes per roll
Part No	Size	Packaging					
SWNW0013	175 x 230mm	700 wipes per roll					

# Contec Dry Wipes



- Widest selection of wipes, both knitted and nonwoven substrates in different sizes and pack formats suitable for all areas of the cleanroom room from Grade A zones to product support areas.
- Choice of substrates from 2-ply quilted knitted polyester through to cost effective nonwovens.
- Knitted wipes are laundered and packaged in a Class 4 cleanroom facility.
- Double bagged to insure product integrity and for ease of transfer into controlled environment.
- Sterile and non-sterile options available.

Not all cleanroom laundry processes are alike; Contec has 25 years of experience in laundry processing of knitted wipes. Contec has created the widest selection of knitted wipes using a variety of fabric types, edge technologies and processing options. By changing these options to meet different cleaning and wiping requirements Contec has engineered a family of products to meet the needs of all areas of a cleanroom facility.

Polyester knits are the cleanest category of wipe for critical environments. The combination of long monofilament fibres and knitted structure creates a strong and durable wipe with very low levels of particulates. Sealed border and laser cut options are available to further reduce particle shedding. Contec knitted wipes are laundered and packaged in a Class 4 cleanroom facility.

Nonwoven blends of polyester with cellulose or lyocell provide more cost effective options with increased sorbency and texture.

Microfibre wipes are the premium fabric for removing residues from surfaces, with outstanding sorbency they are excellent for trapping and removing dry particles. New blends of microfibre and polypropylene produce a cost effective single use wipe with all the benefits of microfibre.

The special Tax-Fre dry wipes are treated with a unique pressure sensitive tack formulation which is ideal for use in controlled environments providing superb dry particle removal with minimum levels of tack transfer.

"polyester knits are the cleanest category of wipe for critical environments"

## Features and Benefits

<b>Wide range of substrates and sizes</b>	<ul style="list-style-type: none"> <li>• The most cost effective and suitable wipe can be used in each area of the cleanroom</li> </ul>
<b>Vertically integrated manufacturing</b>	<ul style="list-style-type: none"> <li>• More of Contec’s manufacturing process is controlled than any other supplier</li> </ul>
<b>Wide range of finishing treatments</b>	<ul style="list-style-type: none"> <li>• Allows optimisation of sorbency</li> <li>• Particle Attraction Technology (P.A.T.) increases particle pick up, retention and removal by 35%</li> </ul>
<b>Validated sterile options</b>	<ul style="list-style-type: none"> <li>• Meets GMP requirements for sterile products in Grade A and B zones.</li> </ul>
<b>Knitted wipes are laundered and treated in a Class 4 cleanroom</b>	<ul style="list-style-type: none"> <li>• Minimises Non-Volatile Residues (NVR’s) and particles</li> <li>• Leaves wipes sorbent enough for good functionality</li> </ul>

## Pyrogens and endotoxins

A pyrogen is quite simply a fever producing substance, from the Greek "pyr" for fire and "gengin" to produce. Some of the most common types of pyrogens are bacterial endotoxins. These are derived from the outer cell membranes of gram-negative bacteria and are released upon breakdown of the cell wall or bacterial cell lysis. The terms endotoxin and pyrogen are often used interchangeably. Products containing pyrogens (endotoxins) can pose a life threatening risk to patients.

A sterile product is not necessarily pyrogen / endotoxin free. The process of sterilisation only ensures the absence of viable living bacteria. In fact, the process of sterilisation of a product may result in higher levels of endotoxins being present as the irradiation process kills any gram-negative bacteria present leading to bacterial cell lysis and the release of endotoxins. If a product is manufactured with very low levels of initial bioburden in clean conditions it is possible to create products where only very small numbers of endotoxins are created during the sterilisation process.

Endotoxins are measured in Endotoxin Units, usually expressed as EU/ml or EU/device. Contec can offer both a dry and presaturated product with guaranteed low levels of endotoxin contamination.

"Contec can offer both a dry and presaturated product with guaranteed low levels of endotoxin contamination"

## Dry Wipe Selection Guide

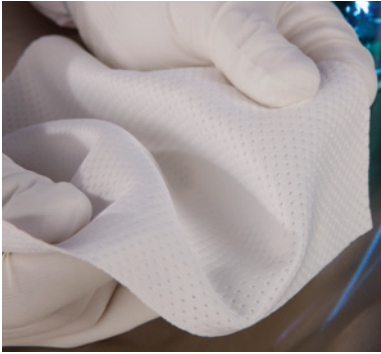
Contec Dry Wipes								
Product Name	Wipe Substrate	Edge Style	Sterile	Non-sterile	Hexawipe/QuickPick Option	Area of use		
						Grade A/B	Grade C/D	Prep Areas
Sterile Quilted I	2-ply 100% interlock knit polyester	Sealed	Y		H	V	N	N
Sterile Polynit Heatseal	100% no-run interlock knit polyester	Sealed	Y		QP	V	N	N
Sterile Anticon Gold Sorb	70/30% blend of standard/microfilament polyester	Sealed	Y			V	N	N
Sterile Anticon Gold HeavyWeight	100% no-run interlock knit polyester	Sealed	Y			V	N	N
Sterile Anticon 100 HeavyWeight	100% no-run interlock knit polyester	Cut	Y			V	N	N
Dupont Sontara Nonpyrogenic	Nonwoven polyester / lyocell	Cut	Y			V	N	N
SterileSorb	Nonwoven polyester / cellulose	Cut	Y			V	N	N
Quilted I	2-ply 100% interlock knit polyester	Sealed		Y		N	S	N
Polynit Heatseal	100% no-run interlock knit polyester	Sealed		Y	H	N	S	N
Polynit	100% no-run interlock knit polyester	Cut		Y		N	S	N
Anticon Gold HeavyWeight	100% no-run interlock knit polyester	Sealed		Y		N	S	N
Anticon 100 HeavyWeight	100% no-run interlock knit polyester	Cut		Y		N	S	N
Polywipe-C Heatseal	100% interlock knit polyester	Sealed		Y	H	N	S	N
Polywipe-C	100% interlock knit polyester	Cut		Y		N	S	N
White Magic with PAT	100% interlock knit polyester	Sealed		Y		N	S	N
Amplitude Delta	100% nonwoven polyester	Cut		Y		N	V	S
Amplitude Sigma	Nonwoven polyester / cellulose	Cut		Y		N	V	S
Amplitude Epsilon	Nonwoven polyester / cellulose (blue)	Cut		Y		N	V	S
Amplitude Prozorb	Nonwoven polyester / cellulose (textured)	Cut		Y		N	V	S
Amplitude Helix	Meltblown polypropylene	Cut		Y		N	V	S
Amplitude Zeta	Polypropylene and cellulose laminate	Cut		Y		N	V	S
Amplitude EcoCloth	Polyester / cellulose	Cut		Y		N	V	V
Amplitude Theta	Polyester / cellulose (lightweight)	Cut		Y		N	V	V
Anticon Gold Sorb	70/30% blend of standard/microfilament polyester	Sealed		Y		N	S	N
MicroSilk II	80/20% blend of microfibre polyester / nylon	Sealed		Y		N	S	N
MicroGenesis	Microfibre stitchbonded to polypropylene	Cut		Y		N	S	V

V Very suitable

S Suitable

N Not suitable

# Contec *Sterile* Knitted Polyester Wipes



- Manufactured from multi-filament textured polyester yarn which creates highly durable and tear resistant wipes.
- Knitted structure enhances particle entrapment and increases sorbency.
- 100% man made fibre is extremely low in fibres and particles.
- Knitted polyester wipes are soft and pliable with microbiological cleanliness.

Polyester knits are the cleanest category of wipes for critical environments. These wipes are made from multi-filament textured polyester yarns that offer an excellent balance of sorbency and cleanliness. These wipes are available with soft knife cut edges and cleaner laser cut edges. Through years of continuous improvement, Contec has created processes that minimise non-volatile residues (NVR's) and particles, yet result in a sorbent wipe with good functionality. All of Contec's sterile knitted wipes are laundered and packed in a Class 4 cleanroom.

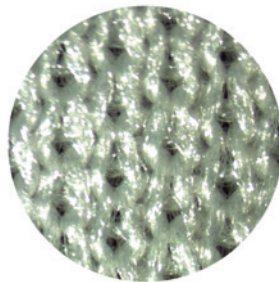
This makes these wipes ideal for product contact areas, where the ideal wipe needs to be sterile, very low in particles and fibres but sorbent enough to apply an even layer of alcohol or disinfectant.

The wipes are packaged in small quantities, maximum 30 wipes per pack to eliminate wastage. Either validated sterile to  $10^{-6}$  SAL or irradiated at a minimum of 25 kGy the wipes are provided in double plastic packaging for easy transfer into the Grade A zone. Each sterile product comes with lot-specific Certificates of Conformance and Irradiation.

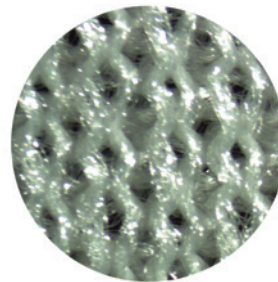
"ideal for product contact areas, where the ideal wipe needs to be sterile and very low in particles and fibres"

## Types of knitted wipe

Wipes can be knitted in a variety of ways to improve the performance characteristics. All Contec's knitted wipes as a minimum have been created using an interlock knit which is a variation of a rib knit where any given stitch will reveal another knit stitch. This makes the wipe more durable and provides a slightly heavier basis weight.



Interlock



No-run interlock knit

All Contec's heavier weight wipes, 140g/m<sup>2</sup> are created using a no-run interlock knit. This is similar to the interlock knit but a periodic extra stitch is added that does not allow the fabric to "run" or unravel if snagged. This make the wipe very durable and suitable for use on a wide variety of surfaces.



"Contec knitted polyester wipes offer an excellent balance of sorbency and cleanliness"



## Ordering Guide

<b>Sterile Quilted I</b>	<ul style="list-style-type: none"> <li>• 240g/m<sup>2</sup> 2-ply quilted polyester wipe for increased strength, durability and sorbency</li> <li>• Most sorbent sealed edge wipe available</li> <li>• Extremely low levels of particles and fibres</li> </ul> <table border="1"> <thead> <tr> <th>Part No</th> <th>Size</th> <th>Packaging</th> </tr> </thead> <tbody> <tr> <td>LWQT0031</td> <td>300 x 300mm</td> <td>10 wipes per bag</td> </tr> </tbody> </table>	Part No	Size	Packaging	LWQT0031	300 x 300mm	10 wipes per bag						
Part No	Size	Packaging											
LWQT0031	300 x 300mm	10 wipes per bag											
<b>Sterile Polynit Heatseal</b>	<ul style="list-style-type: none"> <li>• 140g/m<sup>2</sup> no-run interlock knit 100% polyester with good sorbency and chemical resistance</li> <li>• Laser cut edges for 100% utilization of wipe</li> <li>• No-run interlock knit creates a very durable wipe</li> </ul> <table border="1"> <thead> <tr> <th>Part No</th> <th>Size</th> <th>Packaging</th> </tr> </thead> <tbody> <tr> <td>PN-99IR</td> <td>230 x 230mm</td> <td>10 wipes per bag</td> </tr> <tr> <td>LWPS0006</td> <td>230 x 230mm</td> <td>25 wipes per bag</td> </tr> <tr> <td>LWPS0007</td> <td>300 x 300mm</td> <td>25 wipes per bag</td> </tr> </tbody> </table>	Part No	Size	Packaging	PN-99IR	230 x 230mm	10 wipes per bag	LWPS0006	230 x 230mm	25 wipes per bag	LWPS0007	300 x 300mm	25 wipes per bag
Part No	Size	Packaging											
PN-99IR	230 x 230mm	10 wipes per bag											
LWPS0006	230 x 230mm	25 wipes per bag											
LWPS0007	300 x 300mm	25 wipes per bag											
<b>Sterile Anticon Gold Sorb</b>	<ul style="list-style-type: none"> <li>• 140g/m<sup>2</sup> 100% polyester wipe with a 70/30% blend of standard polyester and microfilament polyester</li> <li>• Combines the performance of a microfibre with the cleanliness of polyester</li> <li>• Laser cut edges for 100% utilisation of wipe</li> <li>• Very low levels of particles and fibres</li> </ul> <table border="1"> <thead> <tr> <th>Part No</th> <th>Size</th> <th>Packaging</th> </tr> </thead> <tbody> <tr> <td>492238-960</td> <td>300 x 300mm</td> <td>25 wipes per bag</td> </tr> </tbody> </table>	Part No	Size	Packaging	492238-960	300 x 300mm	25 wipes per bag						
Part No	Size	Packaging											
492238-960	300 x 300mm	25 wipes per bag											
<b>Sterile Anticon Gold HeavyWeight</b>	<ul style="list-style-type: none"> <li>• 140g/m<sup>2</sup> 100% polyester wipe, a blend of 70% standard filament polyester and 30% microfibre polyester</li> <li>• Laser cut edges for 100% utilization of wipe</li> <li>• Very low levels of particles and fibres</li> </ul> <table border="1"> <thead> <tr> <th>Part No</th> <th>Size</th> <th>Packaging</th> </tr> </thead> <tbody> <tr> <td>492226-942</td> <td>300 x 300mm</td> <td>20 wipes per bag</td> </tr> </tbody> </table>	Part No	Size	Packaging	492226-942	300 x 300mm	20 wipes per bag						
Part No	Size	Packaging											
492226-942	300 x 300mm	20 wipes per bag											
<b>Sterile Anticon 100 HeavyWeight</b>	<ul style="list-style-type: none"> <li>• 140g/m<sup>2</sup> 100% no-run interlock polyester wipe with increased sorbency through a patented finishing process</li> <li>• Knife cut edges create a very soft wipe</li> <li>• Lowest levels of particles and fibres for a cut edge wipe</li> </ul> <table border="1"> <thead> <tr> <th>Part No</th> <th>Size</th> <th>Packaging</th> </tr> </thead> <tbody> <tr> <td>492226-939</td> <td>230 x 230mm</td> <td>20 wipes per bag</td> </tr> </tbody> </table>	Part No	Size	Packaging	492226-939	230 x 230mm	20 wipes per bag						
Part No	Size	Packaging											
492226-939	230 x 230mm	20 wipes per bag											

"ideal general purpose wipes with low levels of particles and fibres"

# Contec *Sterile* Nonwoven Wipes

- Binder free hydroentangled polyester / cellulose wipes.
- Low endotoxin wipe available with less than 20 EU per wipe.
- Small pack sizes in easy-to-open bags are ideal for sterile use and minimise waste.
- Double plastic packaging ensures ease of transfer into high grade cleanrooms.

Contec’s nonwoven sterile wipes provide an economical way to clean and disinfect in Grade A and B cleanrooms. Sterile polyester / cellulose wipes are an ideal general purpose wipe with low levels of particles and fibres. Contec’s sterile nonwoven wipes are binder free and leave no residues in cleanroom environments.

The wipes are packaged in small quantities, maximum 30 wipes per pouch so eliminate wastage. Either validated sterile to 10<sup>-6</sup> SAL or irradiated at a minimum of 25 kGy the wipes are provided in double plastic packaging for easy transfer into the Grade A and B zones.

Dupont Sontara Nonpyrogenic wipes are manufactured from a special blend of lyocell and polyester. The high pressure, hydroentangling process continually “washes” the fabric during the blending process creating a very clean absorbent fabric which has a very low level of endotoxins. Bacterial endotoxins are a common pyrogen which can cause life threatening risks to patients.



## Ordering Guide

<p><b>Dupont Sontara Nonpyrogenic</b></p>	<ul style="list-style-type: none"> <li>• 61g/m<sup>2</sup> polyester / lyocell blend with low levels of particle and fibres</li> <li>• Processed to minimise endotoxin contamination, guaranteed less than 20 EU per wipe</li> <li>• Unique surface texture provides efficient cleaning and particle removal</li> </ul> <table border="1"> <thead> <tr> <th>Part No</th> <th>Size</th> <th>Packaging</th> </tr> </thead> <tbody> <tr> <td>NWPZ0001</td> <td>230 x 230mm</td> <td>25 wipes per bag</td> </tr> <tr> <td>NWPZ0002</td> <td>300 x 300mm</td> <td>25 wipes per bag</td> </tr> </tbody> </table>	Part No	Size	Packaging	NWPZ0001	230 x 230mm	25 wipes per bag	NWPZ0002	300 x 300mm	25 wipes per bag
Part No	Size	Packaging								
NWPZ0001	230 x 230mm	25 wipes per bag								
NWPZ0002	300 x 300mm	25 wipes per bag								
<p><b>SterileSorb</b></p>	<ul style="list-style-type: none"> <li>• 68g/m<sup>2</sup> polyester / cellulose hydroentangled wipe</li> <li>• Cost effective blend providing low levels of particulates</li> <li>• Highly sorbent with good wet strength</li> </ul> <table border="1"> <thead> <tr> <th>Part No</th> <th>Size</th> <th>Packaging</th> </tr> </thead> <tbody> <tr> <td>C2-991R/25</td> <td>230 x 230mm</td> <td>25 wipes per bag</td> </tr> <tr> <td>C2-1212IR</td> <td>300 x 300mm</td> <td>25 wipes per bag</td> </tr> </tbody> </table>	Part No	Size	Packaging	C2-991R/25	230 x 230mm	25 wipes per bag	C2-1212IR	300 x 300mm	25 wipes per bag
Part No	Size	Packaging								
C2-991R/25	230 x 230mm	25 wipes per bag								
C2-1212IR	300 x 300mm	25 wipes per bag								

# Contec Knitted Polyester Wipes

- Manufactured from multi-filament textured polyester yarn which is highly durable and tear resistant.
- Knitted structure enhances particle entrapment and increases sorbency.
- 100% man made fibre is extremely low in fibres and particles.
- Knitted polyester wipes are soft and pliable with good biological cleanliness.

Laundered polyester knits are the cleanest category of wipes for critical environments. These wipes are made from multi-filament textured polyester yarns that offer an excellent balance of sorbency and cleanliness. Through years of continuous improvement, Contec has created processes that minimise non-volatile residues (NVR's) and particles, yet result in a sorbent wipe with good functionality.

Contec has created the widest selection of knitted wipes using a variety of fabric types, edge technologies and processing options. By changing these parameters to meet different requirements, Contec has a range of products which meets the needs of many different customers.

The wipes are available with soft knife cut edges and cleaner laser cut edges. The wipes are laundered and packed in a Class 4 cleanroom and are provided double packed in cleanroom compatible packaging. Each lot is labelled to provide traceability.

White Magic 100% polyester knitted wipes are available with Contec's patented Particle Attraction Technology (PAT) treatment process which traps and retains 35 times more particles than competitor wipes.

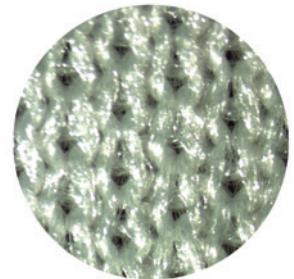
Several of Contec's laser cut knitted polyester wipes are also available as bulk HexaWipes. HexaWipes have a unique hexagonal shape that enables differentiation of wipes for use in critical and less critical areas. Designed to be easily folded with one hand, the 6 sided wipes are unique to Contec.

## Types of knitted wipe

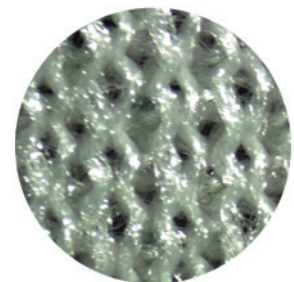
Wipes can be knitted in a variety of ways to improve the performance characteristics. All Contec's knitted wipes as a minimum have been created using an interlock knit which is a variation of a rib knit where any given stitch will reveal another knit stitch. This makes the wipe more durable and provides a slightly heavier basis weight.

All Contec's heavier weight wipes, 140g/m<sup>2</sup> are created using a no-run interlock knit. This is similar to the interlock knit but a periodic extra stitch is added that does not allow the fabric to "run" or unravel if snagged. This makes the wipe very durable and suitable for use on a wide variety of surfaces.

"made from multi-filament textured polyester yarns that offer an excellent balance of sorbency and cleanliness"



Interlock



No-run interlock knit



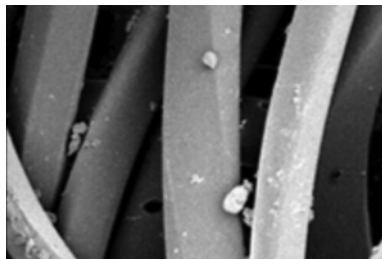
"Wipes with PAT retain 95% of the particles trapped"

### Particle Attraction Technology

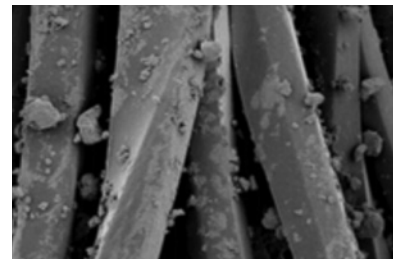
Particle Attraction Technology is a patented treatment that permanently bonds to the polyester fabric. Contec wipes with Particle Attraction Technology attract and retain particles better than traditional cleanroom wipes. This performance is enhanced when combined with isopropanol and other solvents used in cleanroom cleaning.

Wipes with PAT

- Exhibit minimal levels of particles, fibres, ions and extractables.
- Trap 35 times more particles than competitive wipes without PAT, leaving surfaces cleaner.
- Retain 95% of the particles trapped, dramatically reducing the risk of recontamination.
- Trap particles in solution better than competitive wipes, leaving surfaces cleaner.



Without PAT wipe retains fewer particles



With PAT, wipe attracts 35 times more particles, leaving surfaces cleaner



### QuickPick Packaging

As the leading innovator of cost-effective products for the cleaning of critical environments, Contec is constantly looking to deliver value-added solutions to our customer's problems. The patented QuickPick packaging addresses two expensive problems in one convenient package: wipe waste and proper wiping technique.

Sealed-edge wipes are traditionally packaged in either a flat-stacked or a bulk configuration. Both of these packages make it difficult for a gloved operator to remove one wipe from a bag at a time, meaning more wipes are often picked up than are needed for the task. In addition, wipes come out of the package in an inconsistent fashion, and operators must either take time to properly fold them or use them in an improper method.

Contec's QuickPick packaging uses a convenient, blue dispenser bag as the inner-most package for our Polynit Heatseal wipes. The wipes are half-folded with the folded edge easily accessible through the dispensing hole in the top of the bag. Convenient and easy to use, QuickPick packaging addresses both wipe waste and proper wiping technique.



### HexaWipes

Contec engineers developed the patent-pending HexaWipe to enable operators to quickly distinguish a Grade A/B wipe from others used in less critical areas. Designed to be easily folded with one hand, the 6-sided wipes are unique to Contec.

Using a non-sterile Hexawipe product, enables a facility to only use a more expensive sterile wipe in the areas that a sterile wipe is needed, as a quick visual check of the rooms will show if a non-sterile HexaWipe is being used in the wrong area.

## Ordering Guide

<b>Quilted I</b>	<ul style="list-style-type: none"> <li>• 240g/m<sup>2</sup> 2-ply quilted polyester wipe for increased strength, durability and sorbency</li> <li>• Extremely low levels of particles and fibres</li> <li>• Most sorbent sealed edge wipe available</li> </ul> <table border="1"> <thead> <tr> <th>Part No</th> <th>Size</th> <th>Packaging</th> </tr> </thead> <tbody> <tr> <td>QT1-99</td> <td>230 x 230mm</td> <td>100 wipes per bag</td> </tr> <tr> <td>QT1-1212</td> <td>300 x 300mm</td> <td>100 wipes per bag</td> </tr> <tr> <td>LWQT0006</td> <td>300mm Hexawipe</td> <td>100 wipes per bag</td> </tr> </tbody> </table>	Part No	Size	Packaging	QT1-99	230 x 230mm	100 wipes per bag	QT1-1212	300 x 300mm	100 wipes per bag	LWQT0006	300mm Hexawipe	100 wipes per bag
Part No	Size	Packaging											
QT1-99	230 x 230mm	100 wipes per bag											
QT1-1212	300 x 300mm	100 wipes per bag											
LWQT0006	300mm Hexawipe	100 wipes per bag											
<b>Polynit Heatseal</b>	<ul style="list-style-type: none"> <li>• 140g/m<sup>2</sup> 100% no-run interlock knit polyester wipe</li> <li>• Laser cut edges with very low levels of particles and fibres</li> <li>• Available in QuickPick format PNHS-99QP</li> </ul> <table border="1"> <thead> <tr> <th>Part No</th> <th>Size</th> <th>Packaging</th> </tr> </thead> <tbody> <tr> <td>PNHS-99</td> <td>230 x 230mm</td> <td>150 wipes per bag</td> </tr> <tr> <td>PNHS-1212</td> <td>300 x 300mm</td> <td>75 wipes per bag</td> </tr> <tr> <td>LWPS0003</td> <td>230mm Hexawipe</td> <td>150 wipes per bag</td> </tr> </tbody> </table>	Part No	Size	Packaging	PNHS-99	230 x 230mm	150 wipes per bag	PNHS-1212	300 x 300mm	75 wipes per bag	LWPS0003	230mm Hexawipe	150 wipes per bag
Part No	Size	Packaging											
PNHS-99	230 x 230mm	150 wipes per bag											
PNHS-1212	300 x 300mm	75 wipes per bag											
LWPS0003	230mm Hexawipe	150 wipes per bag											
<b>Polynit</b>	<ul style="list-style-type: none"> <li>• 140g/m<sup>2</sup> 100% no-run interlock knit polyester wipe</li> <li>• Very low levels of particles and fibres</li> <li>• Knife cut edges are non abrasive for sensitive surfaces</li> </ul> <table border="1"> <thead> <tr> <th>Part No</th> <th>Size</th> <th>Packaging</th> </tr> </thead> <tbody> <tr> <td>PN-99</td> <td>230 x 230mm</td> <td>150 wipes per bag</td> </tr> <tr> <td>PN-1212</td> <td>300 x 300mm</td> <td>75 wipes per bag</td> </tr> </tbody> </table>	Part No	Size	Packaging	PN-99	230 x 230mm	150 wipes per bag	PN-1212	300 x 300mm	75 wipes per bag			
Part No	Size	Packaging											
PN-99	230 x 230mm	150 wipes per bag											
PN-1212	300 x 300mm	75 wipes per bag											
<b>Anticon Gold HeavyWeight</b>	<ul style="list-style-type: none"> <li>• 140g/m<sup>2</sup> 100% no-run interlock knit polyester wipe with increased sorbency through a patented finishing process</li> <li>• Laser cut edges for 100% utilization of wipe</li> <li>• Very low levels of particles and fibres</li> </ul> <table border="1"> <thead> <tr> <th>Part No</th> <th>Size</th> <th>Packaging</th> </tr> </thead> <tbody> <tr> <td>492224-789</td> <td>230 x 230mm</td> <td>150 wipes per bag</td> </tr> <tr> <td>492224-790</td> <td>300 x 300mm</td> <td>100 wipes per bag</td> </tr> </tbody> </table>	Part No	Size	Packaging	492224-789	230 x 230mm	150 wipes per bag	492224-790	300 x 300mm	100 wipes per bag			
Part No	Size	Packaging											
492224-789	230 x 230mm	150 wipes per bag											
492224-790	300 x 300mm	100 wipes per bag											
<b>Anticon 100 HeavyWeight</b>	<ul style="list-style-type: none"> <li>• 140g/m<sup>2</sup> 100% no-run interlock knit polyester wipe with increased sorbency through a patented finishing process</li> <li>• Knife cut edges create a very soft wipe</li> <li>• Lowest levels of particles and fibres for a cut edge wipe</li> </ul> <table border="1"> <thead> <tr> <th>Part No</th> <th>Size</th> <th>Packaging</th> </tr> </thead> <tbody> <tr> <td>492222-813</td> <td>230 x 230mm</td> <td>150 wipes per bag</td> </tr> <tr> <td>492222-815</td> <td>300 x 300mm</td> <td>100 wipes per bag</td> </tr> </tbody> </table>	Part No	Size	Packaging	492222-813	230 x 230mm	150 wipes per bag	492222-815	300 x 300mm	100 wipes per bag			
Part No	Size	Packaging											
492222-813	230 x 230mm	150 wipes per bag											
492222-815	300 x 300mm	100 wipes per bag											
<b>Polywipe-C Heatseal</b>	<ul style="list-style-type: none"> <li>• 120g/m<sup>2</sup> lightweight 100% textured polyester interlock knit wipe</li> <li>• Cost effective polyester wipe with laser sealed edges to allow 100% utilization of the wipe</li> <li>• Low levels of particles and fibres</li> </ul> <table border="1"> <thead> <tr> <th>Part No</th> <th>Size</th> <th>Packaging</th> </tr> </thead> <tbody> <tr> <td>PCHS-99</td> <td>230 x 230mm</td> <td>150 wipes per bag</td> </tr> <tr> <td>PCHS-1212</td> <td>300 x 300mm</td> <td>75 wipes per bag</td> </tr> <tr> <td>LWCS0004</td> <td>230mm Hexawipe</td> <td>150 wipes per bag</td> </tr> </tbody> </table>	Part No	Size	Packaging	PCHS-99	230 x 230mm	150 wipes per bag	PCHS-1212	300 x 300mm	75 wipes per bag	LWCS0004	230mm Hexawipe	150 wipes per bag
Part No	Size	Packaging											
PCHS-99	230 x 230mm	150 wipes per bag											
PCHS-1212	300 x 300mm	75 wipes per bag											
LWCS0004	230mm Hexawipe	150 wipes per bag											
<b>Polywipe-C</b>	<ul style="list-style-type: none"> <li>• 120g/m<sup>2</sup> lightweight 100% textured polyester interlock knit wipe.</li> <li>• Cost effective polyester wipe with knife cut edges for a soft non abrasive texture</li> <li>• Low levels of particles and fibres</li> </ul> <table border="1"> <thead> <tr> <th>Part No</th> <th>Size</th> <th>Packaging</th> </tr> </thead> <tbody> <tr> <td>PC-99</td> <td>230 x 230mm</td> <td>150 wipes per bag</td> </tr> <tr> <td>PC-1212</td> <td>300 x 300mm</td> <td>75 wipes per bag</td> </tr> <tr> <td>PCB-99</td> <td>230 x 230mm</td> <td>150 wipes per bag (blue wipe)</td> </tr> </tbody> </table>	Part No	Size	Packaging	PC-99	230 x 230mm	150 wipes per bag	PC-1212	300 x 300mm	75 wipes per bag	PCB-99	230 x 230mm	150 wipes per bag (blue wipe)
Part No	Size	Packaging											
PC-99	230 x 230mm	150 wipes per bag											
PC-1212	300 x 300mm	75 wipes per bag											
PCB-99	230 x 230mm	150 wipes per bag (blue wipe)											
<b>White Magic with PAT</b>	<ul style="list-style-type: none"> <li>• 120g/m<sup>2</sup> 100% double knit polyester with laser sealed edges</li> <li>• Treated with Particle Attraction Technology for 35 times greater particle pick up and retention</li> <li>• Patented technology used in the manufacture of this wipe creates a highly sorbent wipe</li> </ul> <table border="1"> <thead> <tr> <th>Part No</th> <th>Size</th> <th>Packaging</th> </tr> </thead> <tbody> <tr> <td>LWWM1001</td> <td>230 x 230mm</td> <td>75 wipes per bag</td> </tr> </tbody> </table>	Part No	Size	Packaging	LWWM1001	230 x 230mm	75 wipes per bag						
Part No	Size	Packaging											
LWWM1001	230 x 230mm	75 wipes per bag											

## Contec Nonwoven Wipes



- A wide range of nonwoven wipes including 100% polyester, meltblown polypropylene and polyester/cellulose blends.
- All blends are binder free ensuring no chemical residues remain.
- Variety of sizes, formats and colours available.

Nonwoven wipes are used for a wide range of applications in controlled environments including cleaning, application of disinfectants, removal of residues, spill control, transfer disinfection as well as for general purpose wiping. Nonwoven wipes offer a variety of performance characteristics and excellent value.

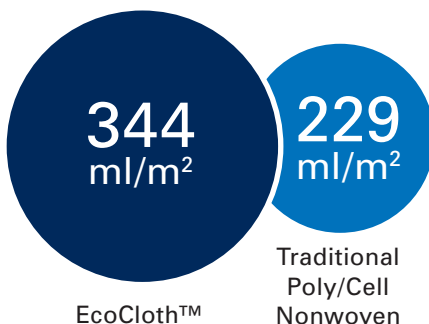
Each type of fibre has a particular strength that makes it suitable for a different critical environment application. Polyester provides durability, chemical compatibility and cleanliness. Cellulose and rayon provide excellent sorbency. Polypropylene provides exceptional cleanliness and uniform application of fluids.

Most high quality nonwovens are made with a spunlaced process which hydroentangles the two fibres using high pressure jets of water. No binders or additives are used resulting in a fabric which is low in fibres and residues.

"Meltblown polypropylene provides a metered release of solvent so is especially suitable for the application of alcohol or disinfectant."

Wipes substrates available, include 100% nonwoven polyester for low levels of fibres and particles and cost effective polyester / cellulose blends which creates clean wipes with good wet strength and absorbency. Meltblown polypropylene provides a metered release of solvent so is especially suitable for the application of alcohol or disinfectant.

Ever conscious of the environment, Contec developed Amplitude EcoCloth with a view to help customers reduce their solid waste. Amplitude EcoCloth is a slightly lower basis weight wipe than a standard polyester / cellulose wipe. However, due to additional loft in the fabric, this wipe has greater sorbency in terms of weight to capacity.

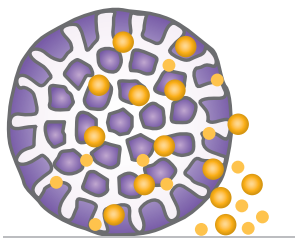


The lower basis weight of Amplitude EcoCloth can reduce your solid waste by up to 40%. This makes Amplitude EcoCloth a very environmentally friendly choice.

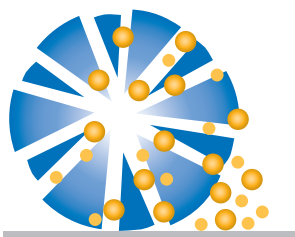
## Ordering Guide

<b>Amplitude Delta</b>	<ul style="list-style-type: none"> <li>• 68g/m<sup>2</sup> nonwoven polyester wipes, a cost effective polyester wipe</li> <li>• Soft, durable and non abrasive</li> <li>• Compatible with a wide range of disinfectants including hypochlorites</li> </ul> <table border="1"> <thead> <tr> <th>Part No</th> <th>Size</th> <th>Packaging</th> </tr> </thead> <tbody> <tr> <td>AMDE0001</td> <td>230 x 230mm</td> <td>300 wipes per bag</td> </tr> <tr> <td>AMDE0002</td> <td>300 x 300mm</td> <td>150 wipes per bag</td> </tr> </tbody> </table>	Part No	Size	Packaging	AMDE0001	230 x 230mm	300 wipes per bag	AMDE0002	300 x 300mm	150 wipes per bag			
Part No	Size	Packaging											
AMDE0001	230 x 230mm	300 wipes per bag											
AMDE0002	300 x 300mm	150 wipes per bag											
<b>Amplitude Sigma</b>	<ul style="list-style-type: none"> <li>• 68g/m<sup>2</sup> polyester / cellulose hydroentangled wipe</li> <li>• Cost effective blend with low levels of particles and fibres</li> <li>• Highly sorbent with good wet strength</li> </ul> <table border="1"> <thead> <tr> <th>Part No</th> <th>Size</th> <th>Packaging</th> </tr> </thead> <tbody> <tr> <td>AMS10001</td> <td>230 x 230mm</td> <td>300 wipes per bag</td> </tr> <tr> <td>AMS10002</td> <td>300 x 300mm</td> <td>150 wipes per bag</td> </tr> <tr> <td>AMS10003</td> <td>460 x 460mm</td> <td>75 wipes per bag</td> </tr> </tbody> </table>	Part No	Size	Packaging	AMS10001	230 x 230mm	300 wipes per bag	AMS10002	300 x 300mm	150 wipes per bag	AMS10003	460 x 460mm	75 wipes per bag
Part No	Size	Packaging											
AMS10001	230 x 230mm	300 wipes per bag											
AMS10002	300 x 300mm	150 wipes per bag											
AMS10003	460 x 460mm	75 wipes per bag											
<b>Amplitude Epsilon</b>	<ul style="list-style-type: none"> <li>• 70g/m<sup>2</sup> blue polyester / cellulose hydroentangled wipe</li> <li>• Same blend as Amplitude Sigma dye fast blue colour allows for differentiation in critical areas</li> <li>• Ideal as a work mat for visual inspection</li> </ul> <table border="1"> <thead> <tr> <th>Part No</th> <th>Size</th> <th>Packaging</th> </tr> </thead> <tbody> <tr> <td>AMEP0001</td> <td>230 x 230mm</td> <td>300 wipes per bag</td> </tr> <tr> <td>AMEP0002</td> <td>300 x 300mm</td> <td>150 wipes per bag</td> </tr> </tbody> </table>	Part No	Size	Packaging	AMEP0001	230 x 230mm	300 wipes per bag	AMEP0002	300 x 300mm	150 wipes per bag			
Part No	Size	Packaging											
AMEP0001	230 x 230mm	300 wipes per bag											
AMEP0002	300 x 300mm	150 wipes per bag											
<b>Amplitude Prozorb</b>	<ul style="list-style-type: none"> <li>• 54g/m<sup>2</sup> textured polyester / cellulose wipe</li> <li>• Apertured surface texture promotes effective cleaning especially biofilm and residue removal</li> <li>• Low levels of particles and fibres</li> </ul> <table border="1"> <thead> <tr> <th>Part No</th> <th>Size</th> <th>Packaging</th> </tr> </thead> <tbody> <tr> <td>PZ-99</td> <td>230 x 230mm</td> <td>200 wipes per bag</td> </tr> <tr> <td>PZ-1212</td> <td>300 x 300mm</td> <td>100 wipes per bag</td> </tr> </tbody> </table>	Part No	Size	Packaging	PZ-99	230 x 230mm	200 wipes per bag	PZ-1212	300 x 300mm	100 wipes per bag			
Part No	Size	Packaging											
PZ-99	230 x 230mm	200 wipes per bag											
PZ-1212	300 x 300mm	100 wipes per bag											
<b>Amplitude EcoCloth</b>	<ul style="list-style-type: none"> <li>• 54g/m<sup>2</sup> hydroentangled polyester / cellulose wipe with additional loft</li> <li>• Highly sorbent wipe, most sorbent of all polyester / cellulose wipes</li> <li>• Low basis weight means less solid waste is produced without compromising performance</li> </ul> <table border="1"> <thead> <tr> <th>Part No</th> <th>Size</th> <th>Packaging</th> </tr> </thead> <tbody> <tr> <td>AMEC0003</td> <td>230 x 230mm</td> <td>300 wipes per bag</td> </tr> <tr> <td>AMEC0004</td> <td>300 x 300mm</td> <td>150 wipes per bag</td> </tr> <tr> <td>AMEC0005</td> <td>460 x 460mm</td> <td>75 wipes per bag</td> </tr> </tbody> </table>	Part No	Size	Packaging	AMEC0003	230 x 230mm	300 wipes per bag	AMEC0004	300 x 300mm	150 wipes per bag	AMEC0005	460 x 460mm	75 wipes per bag
Part No	Size	Packaging											
AMEC0003	230 x 230mm	300 wipes per bag											
AMEC0004	300 x 300mm	150 wipes per bag											
AMEC0005	460 x 460mm	75 wipes per bag											
<b>Amplitude Helix</b>	<ul style="list-style-type: none"> <li>• 68g/m<sup>2</sup> meltblown polypropylene wipes especially suitable for the metered release of disinfectants</li> <li>• Microsized filaments provide exceptional particle removal</li> <li>• Low levels of particles and fibres</li> </ul> <table border="1"> <thead> <tr> <th>Part No</th> <th>Size</th> <th>Packaging</th> </tr> </thead> <tbody> <tr> <td>AMHX0003</td> <td>230 x 230mm</td> <td>200 wipes per bag</td> </tr> <tr> <td>AMHX0004</td> <td>300 x 300mm</td> <td>100 wipes per bag</td> </tr> </tbody> </table>	Part No	Size	Packaging	AMHX0003	230 x 230mm	200 wipes per bag	AMHX0004	300 x 300mm	100 wipes per bag			
Part No	Size	Packaging											
AMHX0003	230 x 230mm	200 wipes per bag											
AMHX0004	300 x 300mm	100 wipes per bag											
<b>Amplitude Zeta</b>	<ul style="list-style-type: none"> <li>• 89g/m<sup>2</sup> 3 ply thermally bonded wipe of a layer of cellulose sealed between 2 layers of meltblown polypropylene</li> <li>• Highly sorbent wipe and very suitable for spill control and wiping to dry</li> <li>• Ideal for use as tray liners</li> </ul> <table border="1"> <thead> <tr> <th>Part No</th> <th>Size</th> <th>Packaging</th> </tr> </thead> <tbody> <tr> <td>AMZE0001</td> <td>200 x 230mm</td> <td>150 wipes per bag</td> </tr> <tr> <td>AMZE0002</td> <td>280 x 300mm</td> <td>75 wipes per bag</td> </tr> </tbody> </table>	Part No	Size	Packaging	AMZE0001	200 x 230mm	150 wipes per bag	AMZE0002	280 x 300mm	75 wipes per bag			
Part No	Size	Packaging											
AMZE0001	200 x 230mm	150 wipes per bag											
AMZE0002	280 x 300mm	75 wipes per bag											
<b>Amplitude Theta</b>	<ul style="list-style-type: none"> <li>• 54g/m<sup>2</sup> lightweight polyester / cellulose hydroentangled wipe</li> <li>• Cost effective wipe for general purpose wiping</li> <li>• Soft and durable for non abrasive applications</li> </ul> <table border="1"> <thead> <tr> <th>Part No</th> <th>Size</th> <th>Packaging</th> </tr> </thead> <tbody> <tr> <td>AMTH0001</td> <td>230 x 230mm</td> <td>300 wipes per bag</td> </tr> <tr> <td>AMTH0002</td> <td>300 x 300mm</td> <td>150 wipes per bag</td> </tr> </tbody> </table>	Part No	Size	Packaging	AMTH0001	230 x 230mm	300 wipes per bag	AMTH0002	300 x 300mm	150 wipes per bag			
Part No	Size	Packaging											
AMTH0001	230 x 230mm	300 wipes per bag											
AMTH0002	300 x 300mm	150 wipes per bag											

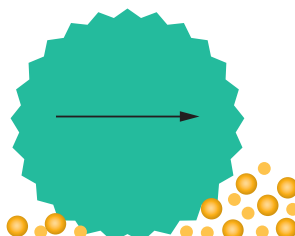
# Contec Microfibre Wipes



Extruded Microfibre



Split Microfibre



Standard Polyester

- A range of microfibre wipes, including 100% polyester and polyester / nylon blends.
- Excellent for residue and particle removal.
- Highly sorbent, microfibre wipes can hold more solution than standard polyester knits.

Microfibre was introduced in the late 1980's. The definition of a microfibre is a fibre with less than 1 decitex per filament, 1 decitex is 9/10 of a denier about 1/16<sup>th</sup> the diameter of a human hair. The fibres can be combined to create yarn which can be then be knitted or woven into a variety of constructions. Microfibre wipes can be made using 100% polyester fine filaments or split fibres that are a blend of polyester and nylon.

This split structure gives the wipe the ability to pick up particles even when dry, and can easily remove residues often without solvent. The increased surface area of a microfibre allows it to collect and hold dust, dirt and particles more effectively than rounded fabrics such as cotton. Virgin wipes are very soft so won't scratch surfaces, however, care should be taken when reusing microfibre wipes as particles can get stuck in the fibres which can then damage sensitive surfaces.

Microfibre has a high sorptive capacity around 6 to 8 times its own weight in water. The fast wicking ability means a wipe can remove spills quickly and easily, so it is very suitable for mop to dry applications.

Contec has a range of microfibre wipes to choose from, 100% polyester standard fibre/microfibre blend, laundered in a Class 4 cleanroom with very low levels of fibres and particles, an 80% polyester / 20% nylon split microfibre and a unique cost effective microfibre solution which has microfibre polyester yarn stitched into a polypropylene substrate.

## Ordering Guide

<p><b>Anticon Gold Sorb</b></p>	<ul style="list-style-type: none"> <li>• 140g/m<sup>2</sup> 100% polyester wipe, a blend of 70% standard filament polyester and 30% microfibre polyester</li> <li>• Combines the performance of a microfibre with the cleanliness of polyester</li> <li>• Laser cut edges for 100% utilisation of wipe</li> <li>• Laundered and packed in a Class 4 cleanroom</li> <li>• Very low levels of particles and fibres</li> </ul> <table border="1"> <thead> <tr> <th>Part No</th> <th>Size</th> <th>Packaging</th> </tr> </thead> <tbody> <tr> <td>492238-956</td> <td>230 x 230mm</td> <td>150 wipes per bag</td> </tr> <tr> <td>492238-958</td> <td>300 x 300mm</td> <td>100 wipes per bag</td> </tr> </tbody> </table>	Part No	Size	Packaging	492238-956	230 x 230mm	150 wipes per bag	492238-958	300 x 300mm	100 wipes per bag
Part No	Size	Packaging								
492238-956	230 x 230mm	150 wipes per bag								
492238-958	300 x 300mm	100 wipes per bag								
<p><b>MicroSilk II</b></p>	<ul style="list-style-type: none"> <li>• 222g/m<sup>2</sup> 80% microfilament polyester / 20% nylon blend wipe</li> <li>• Soft texture ideal for cleaning sensitive surfaces</li> <li>• Laser cut edges for 100% utilisation of wipe</li> <li>• Laundered and packed in a Class 4 cleanroom</li> <li>• Very low levels of particles and fibres</li> </ul> <table border="1"> <thead> <tr> <th>Part No</th> <th>Size</th> <th>Packaging</th> </tr> </thead> <tbody> <tr> <td>LWMD0201</td> <td>230 x 230mm</td> <td>50 wipes per bag</td> </tr> </tbody> </table>	Part No	Size	Packaging	LWMD0201	230 x 230mm	50 wipes per bag			
Part No	Size	Packaging								
LWMD0201	230 x 230mm	50 wipes per bag								
<p><b>MicroGenesis</b></p>	<ul style="list-style-type: none"> <li>• 120g/m<sup>2</sup> 100% microfibre polyester stitched into a thermally bonded polypropylene substrate</li> <li>• Microfibre is only applied to the wiping surface creating a cost effective single use microfibre wipe</li> <li>• Especially suitable for small particle pick up and removal</li> <li>• Highly sorbent and suitable for use with a wide range of disinfectants</li> </ul> <table border="1"> <thead> <tr> <th>Part No</th> <th>Size</th> <th>Packaging</th> </tr> </thead> <tbody> <tr> <td>LWMM0100</td> <td>300 x 250mm</td> <td>100 wipes per bag</td> </tr> <tr> <td>LWMM0300</td> <td>460 x 250mm</td> <td>100 wipes per bag</td> </tr> </tbody> </table>	Part No	Size	Packaging	LWMM0100	300 x 250mm	100 wipes per bag	LWMM0300	460 x 250mm	100 wipes per bag
Part No	Size	Packaging								
LWMM0100	300 x 250mm	100 wipes per bag								
LWMM0300	460 x 250mm	100 wipes per bag								



# Contec Speciality Wipes

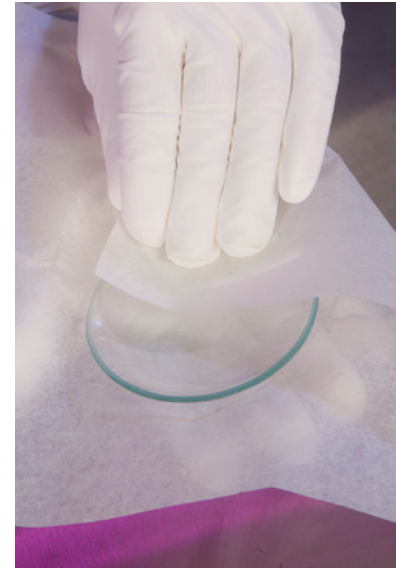
- Range of wipes for specific applications
- Designed for use in cleanroom environments

In addition to the range of standard cleanroom polyester knits and nonwovens, Contec can also offer a range of wipes for very specific applications.

For sensitive components requiring fibre-free wipe down or a cushioned work surface, Contec offers a range of cleanroom compatible foam wipes, either closed cell or open cell in a range of sizes and thicknesses.

Nonwoven polyester Tax-Fre wipes are treated with a proprietary low tack acrylic formulation ideal for dry particle pick up in cleanroom environments. The Tax-Fre nonwoven wipes have been specifically engineered to provide excellent contamination removal from surfaces without sticking or leaving adhesive on the surface. A unique polymer adhesive gives the Tax-Fre wipes a soft, dry feel with no tackiness. A large size wipe is available for dry floor mopping with the Tax-Fre mopping system.

Amplitude Optic Wipes are manufactured from optical grade Abaca cellulose which produces an absorbent non-abrasive wipe which is especially suitable for drying critical products and packing and storage of optical products.



"Contec can also offer a range of wipes for very specific applications"

## Ordering Guide

<b>Foamtec</b>	<ul style="list-style-type: none"> <li>• Open cell (reticulated) polyurethane foam wipes provides good sorbency</li> <li>• Laundered and packed in a Class 4 cleanroom</li> <li>• Excellent for removing and holding particulate contamination</li> <li>• Low levels of particles and extractable residues</li> </ul> <table border="1"> <thead> <tr> <th>Part No</th> <th>Size</th> <th>Packaging</th> </tr> </thead> <tbody> <tr> <td>F9-691/16L</td> <td>150 x 230 x 1.6mm</td> <td>25 wipes per bag</td> </tr> </tbody> </table>	Part No	Size	Packaging	F9-691/16L	150 x 230 x 1.6mm	25 wipes per bag
Part No	Size	Packaging					
F9-691/16L	150 x 230 x 1.6mm	25 wipes per bag					
<b>FoamZorb</b>	<ul style="list-style-type: none"> <li>• Closed cell foam (non-reticulated) polyurethane foam increases the durability</li> <li>• Processed and packed in a Class 4 cleanroom</li> <li>• Low levels of particles and extractable residues</li> </ul> <table border="1"> <thead> <tr> <th>Part No</th> <th>Size</th> <th>Packaging</th> </tr> </thead> <tbody> <tr> <td>FZ881/8/KEM</td> <td>200 x 200 x 3.2mm</td> <td>18 wipes per bag</td> </tr> </tbody> </table>	Part No	Size	Packaging	FZ881/8/KEM	200 x 200 x 3.2mm	18 wipes per bag
Part No	Size	Packaging					
FZ881/8/KEM	200 x 200 x 3.2mm	18 wipes per bag					
<b>Tax-Fre</b>	<ul style="list-style-type: none"> <li>• 50g/m<sup>2</sup> nonwoven polyester treated with a pressure sensitive tack formulation to aid dry particle pick up</li> <li>• Low tack formulation ensures no transfer of tack to the surface being cleaned</li> <li>• Ideal for dry cleaning with low levels of particles generated</li> </ul> <table border="1"> <thead> <tr> <th>Part No</th> <th>Size</th> <th>Packaging</th> </tr> </thead> <tbody> <tr> <td>TAX-FRE</td> <td>250 x 460mm (stacked)</td> <td>100 wipes per bag</td> </tr> </tbody> </table>	Part No	Size	Packaging	TAX-FRE	250 x 460mm (stacked)	100 wipes per bag
Part No	Size	Packaging					
TAX-FRE	250 x 460mm (stacked)	100 wipes per bag					
<b>Amplitude Optic Wipe</b>	<ul style="list-style-type: none"> <li>• 17g/m<sup>2</sup> optical grade Abaca nonwoven cellulose wipe with long staple fibres creates an absorbent non abrasive wipe</li> <li>• Designed for delicate cleaning of optical components and sensitive items</li> <li>• Ideal for use as tray liners and drying critical products</li> <li>• Low levels of extractables and moderate particle generation</li> </ul> <table border="1"> <thead> <tr> <th>Part No</th> <th>Size</th> <th>Packaging</th> </tr> </thead> <tbody> <tr> <td>C6-99</td> <td>230 x 230mm</td> <td>500 wipes per bag</td> </tr> </tbody> </table>	Part No	Size	Packaging	C6-99	230 x 230mm	500 wipes per bag
Part No	Size	Packaging					
C6-99	230 x 230mm	500 wipes per bag					

# Contec Speciality Wipes

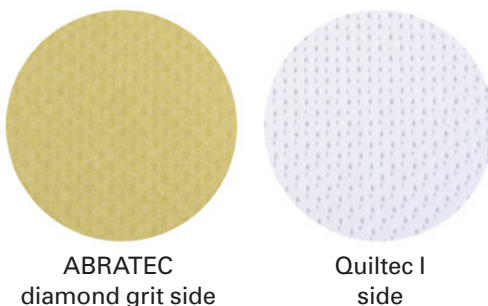


- ABRATEC abrasive cloths are ideal for stainless steel remediation and disinfectant residue removal
- Designed for use in cleanroom environments

Corrosion of stainless steel equipment can pose a significant problem for many life science manufacturers. Corroded surfaces are difficult to clean and disinfect as the rough surface does not allow good contact with the disinfectant and provides places for bacteria to hide. To facilitate remediation, Contec's ABRATEC abrasive pads are made with various levels of abrasive diamond grit backed with Contec's unique Quiltec fabric.

The use of Quiltec 2-ply, sealed edge, 100% quilted polyester instead of a foam backing produces a significantly more durable and abrasion resistant cloth. This abrasion resistance and Contec's sealed border technology allow the Quiltec side to remove sanding debris without contributing additional particles to the remediation process.

ABRATEC abrasive cloths are designed to work with solvents, including the IPA/water blends typically found in lifescience cleanrooms. ABRATEC cloths are also available irradiated with a dose of no less than 25kGy, which helps maintain the integrity of sterile environments, and are autoclavable at a recommended setting of 121°C.



## Ordering Guide

<p><b>ABRATEC sterile abrasive cloths</b></p>	<ul style="list-style-type: none"> <li>• Range of diamond grits backed with Quiltec I for durability and abrasion resistance</li> <li>• Sealed edge reduces possible particle contamination</li> <li>• Compatible with a wide range of chemicals</li> <li>• Gamma irradiated at no less than 25 kGy so suitable for use in Grade A/B environments</li> </ul> <table border="1"> <thead> <tr> <th>Part No</th> <th>Size</th> <th>Packaging</th> </tr> </thead> <tbody> <tr> <td>ATQT0280IR</td> <td>280 grit 80 x 100mm</td> <td>5 wipes per bag</td> </tr> <tr> <td>ATQT0360IR</td> <td>360 grit 80 x 100mm</td> <td>5 wipes per bag</td> </tr> <tr> <td>ATQT1350IR</td> <td>1350 grit 80 x 100mm</td> <td>5 wipes per bag</td> </tr> </tbody> </table>	Part No	Size	Packaging	ATQT0280IR	280 grit 80 x 100mm	5 wipes per bag	ATQT0360IR	360 grit 80 x 100mm	5 wipes per bag	ATQT1350IR	1350 grit 80 x 100mm	5 wipes per bag
Part No	Size	Packaging											
ATQT0280IR	280 grit 80 x 100mm	5 wipes per bag											
ATQT0360IR	360 grit 80 x 100mm	5 wipes per bag											
ATQT1350IR	1350 grit 80 x 100mm	5 wipes per bag											
<p><b>ABRATEC abrasive cloths</b></p>	<ul style="list-style-type: none"> <li>• Range of diamond grits backed with Quiltec I for durability and abrasion resistance</li> <li>• Sealed edge reduces possible particle contamination</li> <li>• Compatible with a wide range of chemicals</li> </ul> <table border="1"> <thead> <tr> <th>Part No</th> <th>Size</th> <th>Packaging</th> </tr> </thead> <tbody> <tr> <td>ATQT0280</td> <td>280 grit 80 x 100mm</td> <td>5 wipes per bag</td> </tr> <tr> <td>ATQT0360</td> <td>360 grit 80 x 100mm</td> <td>5 wipes per bag</td> </tr> <tr> <td>ATQT1350</td> <td>1350 grit 80 x 100mm</td> <td>5 wipes per bag</td> </tr> </tbody> </table>	Part No	Size	Packaging	ATQT0280	280 grit 80 x 100mm	5 wipes per bag	ATQT0360	360 grit 80 x 100mm	5 wipes per bag	ATQT1350	1350 grit 80 x 100mm	5 wipes per bag
Part No	Size	Packaging											
ATQT0280	280 grit 80 x 100mm	5 wipes per bag											
ATQT0360	360 grit 80 x 100mm	5 wipes per bag											
ATQT1350	1350 grit 80 x 100mm	5 wipes per bag											
<p><b>VKSponge</b></p>	<ul style="list-style-type: none"> <li>• Highly absorbent sponge for removal of slurry from ABRATEC cloths</li> <li>• Extends the life of the ABRATEC cloth</li> <li>• Clean ester foam laminated to knitted polyester generates very low levels of particulates</li> </ul> <table border="1"> <thead> <tr> <th>Part No</th> <th>Size</th> <th>Packaging</th> </tr> </thead> <tbody> <tr> <td>VKSPONGE-55</td> <td>128 x 128mm</td> <td>12 sponges per bag</td> </tr> </tbody> </table>	Part No	Size	Packaging	VKSPONGE-55	128 x 128mm	12 sponges per bag						
Part No	Size	Packaging											
VKSPONGE-55	128 x 128mm	12 sponges per bag											

# Contec Wipe Comparison Guide

Brand	Substrate	Page No	Sterile Option	Presat Option	Edge cut	Weight g/m <sup>2</sup>	Area of Use			Extrinsic sorbency ml/m <sup>2</sup>	Particles ≥ 0.5 µm x 10 <sup>6</sup> /m <sup>2</sup>	Fibres > 100 µm x 10 <sup>5</sup> /m <sup>2</sup>
							Grade A/B	Grade C/D	Prep Areas			
Quiltec I	2-ply 100% polyester interlock knit	Page 19	Page 15		Sealed	240	V*	S	N	584	5.4	0.1
MicroSilk II	80/20% blend of microfibre polyester / nylon	Page 22			Sealed	222	N	S	N	356	32.8	1.1
Anticon Gold Sorb	70/30% blend of standard/microfilament polyester	Page 22	Page 15		Sealed	140	V*	S	N	542	9.8	0.2
Polynit Heatseal	100% no-run interlock knit polyester	Page 19	Page 15	Page 8/10	Sealed	140	V*	S	N	357	4.3	0.2
Polynit	100% no-run interlock knit polyester	Page 19			Cut	140	N	S	N	321	5.1	0.2
Anticon Gold HeavyWeight	100% no-run interlock knit polyester	Page 19	Page 15		Sealed	140	V*	S	N	528	10.1	0.2
Anticon 100 HeavyWeight	100% no-run interlock knit polyester	Page 19	Page 15		Cut	140	V*	S	N	618	11.3	3.2
Polywipe-C Heatseal	100% interlock knit polyester	Page 19		Page 10	Sealed	120	N	S	N	298	4.1	0.1
Polywipe-C	100% interlock knit polyester	Page 19			Cut	120	N	S	N	298	4.1	1.2
MicroGenesis	Microfibre stitched into meltblown polypropylene	Page 22			Cut	120	N	S	V	575	10.0	10.0
White Magic with PAT	100% interlock knit polyester	Page 19			Sealed	120	N	S	N	448	12.0	0.2
Amplitude Zeta	3-ply polypropylene and cellulose laminate	Page 21			Cut	89	N	V	S	545	111.0	48.6
Amplitude Epsilon	Polyester / cellulose (blue)	Page 21			Cut	70	N	V	S	288	23.1	24.5
SterileSorb	Polyester / cellulose		Page 16		Cut	68	Y	N	N	281	21.5	37.7
Amplitude Sigma	Polyester / cellulose	Page 21		Page 9/10	Cut	68	N	V	S	281	21.5	37.7
Amplitude Delta	100% nonwoven polyester	Page 21		Page 9	Cut	68	N	V	S	221	16.5	1.0
Amplitude Helix	Meltblown polypropylene	Page 21		Page 9/10	Cut	68	N	V	S	250	25.5	0.1
Dupont Sontara	Polyester / lycell		Page 16		Cut	61	Y	N	N	284	12.2	9.2
Amplitude EcoCloth	Polyester / cellulose (extra loft)	Page 21			Cut	54	N	V	V	344	13.5	29.4
Amplitude Prozorb	Polyester / cellulose (textured)	Page 21			Cut	54	N	V	S	322	25.3	10.7
Amplitude Theta	Polyester / cellulose (lightweight)	Page 21		Page 9/10	Cut	54	N	V	V	246	18.6	21.7
Tax-Fre	Nonwoven treated polyester	Page 23			Cut	50	N	S	V	N/A	7.0	10.4
Amplitude Optic Wipe	Abaca cellulose	Page 23			Cut	17	N	S	S	79	42.4	0.5

V\* Very suitable when sterile V Very suitable S Suitable N Not suitable

## Notes

All test work is carried out on the dry substrate to the requirements of IEST-RP-CC004.2 or CC004.3. Data shown are nominal typical values and should not be used as the product specifications. Valid product comparisons may only be obtained through side-by-side testing in the same test facility, using the same test methods and test equipment.



Contec® cleaning and disinfecting products are available throughout the world. Sales representatives are conveniently located across Europe, Asia and North and South America. Visit our web site to find a representative in your area and to learn more about our products for critical environments.

Presaturated Wipes  
Mopping Systems  
Disinfectants

Sterile Products  
Knitted Wipes  
Spill Control Products

Sponges  
Nonwoven Wipes  
Swabs

#### **Contec Europe**

ZI du Prat - RP 3707  
56037 VANNES Cedex  
FRANCE

Tel: +33 (0) 2 97 43 76 90

#### **Contec Cleanroom Technology (Suzhou) Co. Ltd.**

17 Longyun Road  
Suzhou Industrial Park  
Suzhou 215026  
China

Tel: +86-512-6274 4050

#### **Contec, Inc.**

P.O. Box 530  
Spartanburg, SC 29304 USA

Tel: +1-864-503-8333

Tel: +1-800-289-5762

[www.contecinc.com](http://www.contecinc.com)

Contec® and the Contec logo and logotype are registered trademarks of Contec, Inc. PROSAT and Anticon are registered trademarks of Contec, Inc. Quiltec I, Polynit Heatseal, Polynit, Polywipe-C Heatseal, Polywipe-C, MicroSilk II, MicroGenesis, Amplitude Delta, Amplitude Sigma, Amplitude Helix, Amplitude Theta, Amplitude Zeta, Amplitude ProSorb, Amplitude EcoCloth, Amplitude Epsilon, SterileSorb, Tax-Fre, Foamtec and FoamZorb are all trademarks of Contec, Inc. Dupont and Sontara are registered trademarks and trademarks of E. I. du Pont de Nemours and Company or its affiliates. Contec's product range is continually being updated and improved, we therefore reserve the right to change, modify or withdraw any product without notice. Due to the wide range of applications, Contec, Inc. makes no guarantees, specific or implied for the suitability of use for specific products. Purchasers and users should verify that products are suitable for the intended use. Copyright © 2013 Contec, Inc.